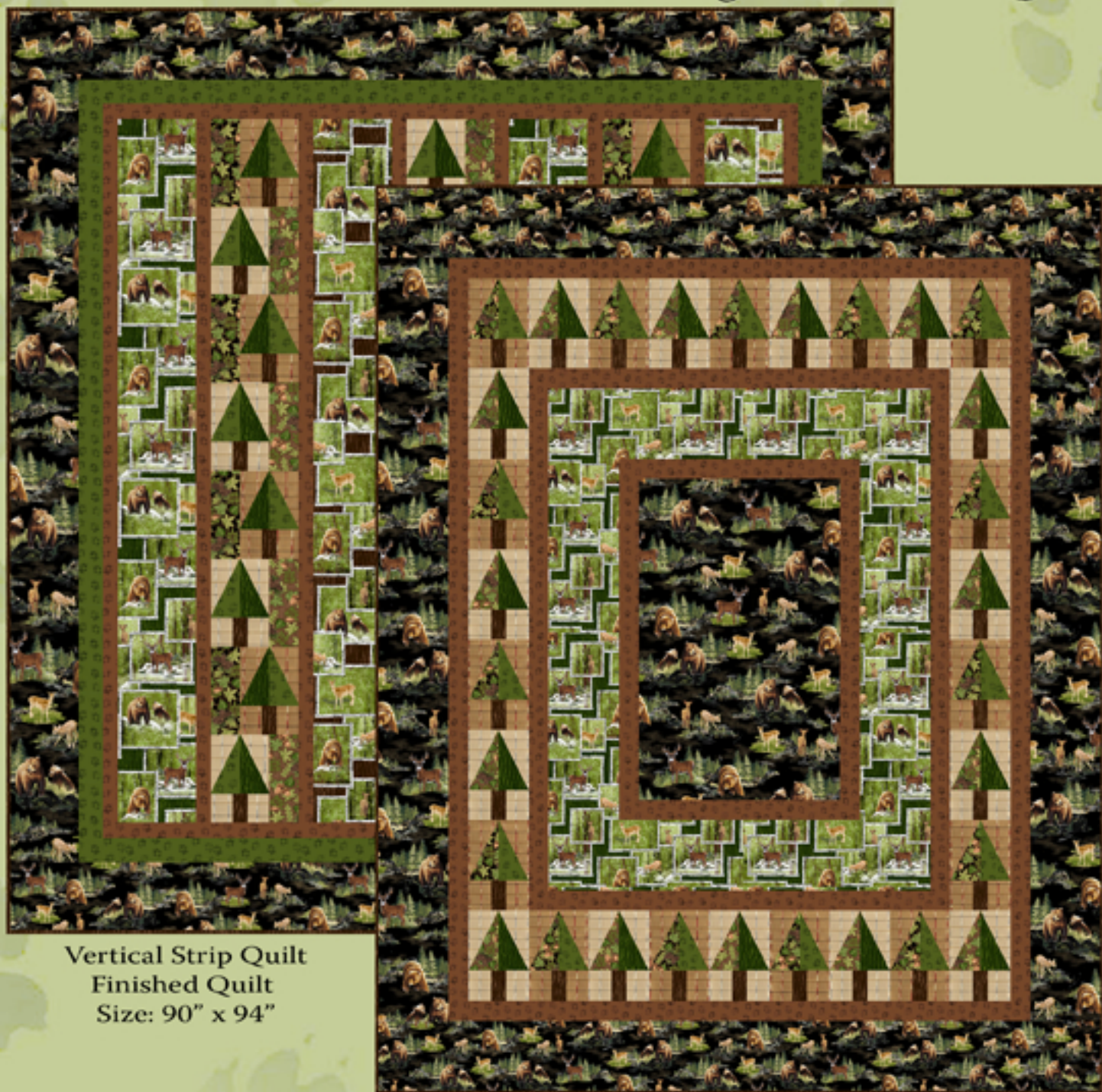


# Wilderness Trail

by fresh designs



Vertical Strip Quilt  
Finished Quilt  
Size: 90" x 94"

Center Panel Quilt  
Finished Quilt Size: 72" x 90"

*A Free Pattern Sheet from*



**Henry Glass & Co.**

49 West 37th Street, New York, NY 10018

tel: 212-686-5194 fax: 212-532-3525

Toll Free: 800-294-9495

[www.henryglassfabrics.com](http://www.henryglassfabrics.com)

# Wilderness Trail

## Fabrics in the Collection



9267-44  
Cream Forest Print



9267-99  
Black Forest Print



9268-33  
Brown Paw Print



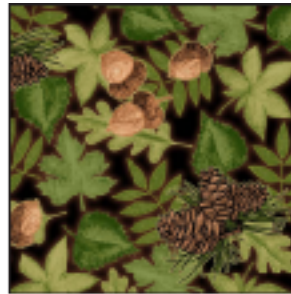
9268-66  
Green Paw Print



9268-99  
Grey Paw Print



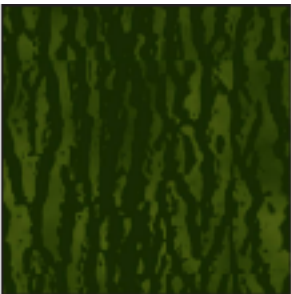
9269-33  
Brown Acorn Print



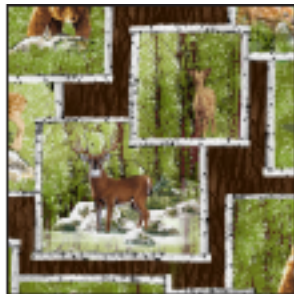
9269-99  
Black Acorn Print



9270-33  
Dark Brown



9270-66  
Dark Green



9271-33  
Brown Animal Print



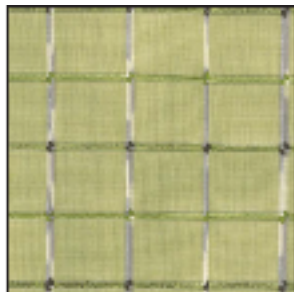
9271-66  
Green Animal Print



9272-33  
Dark Plaid



9272-44  
Light Plaid



9272-66  
Green Plaid

Quilts Designed By: Cate Tallman-Evans  
Center Panel Finished Quilt Size: 72" x 90"  
Vertical Strip Finished Quilt Size: 90" x 94"  
Tree Block Finished Size: 6" x 9"

# Wilderness Trail Center Panel Quilt

## Materials

(9267-99)	Black Forest Print	3 ¼ yards
(9271-66)	Green Animal Print	1 ⅝ yards
(9268-33)	Brown Paw Print	1 ¼ yards
(9270-33)	Dark Brown	1 yard
	(includes binding)	
(9272-33)	Dark Plaid	¾ yard
(9272-44)	Light Plaid	¾ yard
(9268-66)	Green Paw Print	¾ yard
(9270-66)	Dark Green	¾ yard
(9269-33)	Brown Acorn Print	¾ yard
(9269-99)	Black Acorn Print	¾ yard
(9267-44)	Cream Forest Print	5 ¾ yards
	(for quilt backing)	

Template Plastic

## Cutting Instructions

*Please note: all strips are cut across the width of the fabric from selvage edge to selvage edge except where noted below.*

### From the black forest print, cut:

- (4) 7 ½" strips. Refold the remaining yardage and cut (2) 7 ½" wide x 76 ½" high **lengthwise** strips and (1) 20 ½" wide x 32 ½" high panel.

### From the green animal print, cut:

- (2) 7 ½" strips. Trim each strip to 38 ½". Refold the remaining yardage and cut (2) 7 ½" wide x 36 ½" high **lengthwise** strips.

### From the brown paw print, cut:

- (16) 2 ½" strips. Trim (2) strips to 32 ½". Trim (2) strips to 24 ½".

### From the dark brown, cut:

- (2) 3 ½" strips. Recut into (30) 2" x 3 ½" pieces.
- (9) 2 ½" strips for the binding.

### From EACH of the dark and light plaids, cut:

- (2) 6 ½" strips.
- (2) 3 ½" strips. Recut into (30) 2 ¾" x 3 ½" pieces.

### From EACH of the green paw print, dark green, brown acorn print, and black acorn print, cut:

- (1) 6 ½" strip.

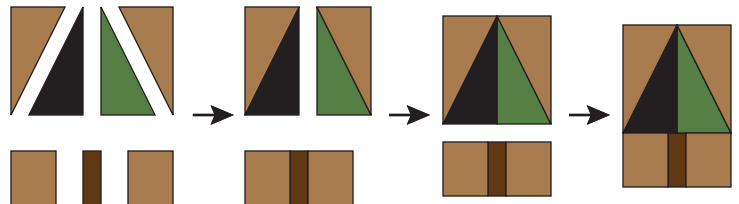
## Sewing Instructions

*All seams are sewn using 1/4" seam allowance with pieces held right sides together and raw edges even.*

1. Stitch 2 ½" x 32 ½" brown paw print strips to the right and left sides of the 20 ½" x 32 ½" black forest print panel. Sew 2 ½" x 24 ½" brown paw print strips to the top and bottom of the center panel.
2. Stitch the 7 ½" x 36 ½" green animal print strips to the right and left sides of the quilt top. Sew the 7 ½" x 38 ½" green animal print strips to the top and bottom.

### Triangle A Template

3. Trim the selvages from the (12) remaining brown paw print strips. Sew the strips together end to end to make a long 2 ½" strip. From this long strip cut: (2) 72 ½", (2) 58 ½", (2) 50 ½", and (2) 42 ½" lengths. Sew the 50 ½" lengths to the right and left sides of the quilt top. Stitch the 42 ½" lengths to the top and bottom.
4. Using template plastic and the paper pattern provided, make a template for Triangle A. Cut (15) Triangle A from EACH of the: dark plaid, light plaid, green paw print, and dark green. Turn the template upside down and cut (15) Triangle A Reverse from EACH of the: dark plaid, light plaid, brown acorn print, and black acorn print.
5. Stitch a green paw print Triangle A to a dark plaid Triangle A. Stitch a black acorn print Triangle A Reverse to a dark plaid Triangle A Reverse. Stitch the two units together to make (1) tree unit. Stitch 2 ¾" x 3 ½" dark plaid pieces to each long side of a 2" x 3 ½" dark brown piece to make (1) trunk unit. Stitch the trunk unit to the bottom of the tree unit to make one 6 ½" x 9 ½" tree block. Repeat to make a total of (15) identical dark plaid blocks. Repeat this procedure using the light plaid, dark green, and brown acorn print patches to make a total of (15) identical light plaid tree blocks.



6. Referring to the quilt pictured on the cover, stitch (3) dark plaid and (3) light plaid tree blocks end to end to make a 6 ½" x 54 ½" border strip, alternating the two types of blocks. Repeat to make a second unit. Sew these pieced borders to the right and left sides of the quilt top. Sew (5) dark plaid and (4) light plaid tree blocks side by side, alternating the two types of blocks. Sew this border to the top of the quilt. Stitch (5) light plaid and (4) dark plaid tree blocks side by side, alternating the two types of blocks. Sew this border to the bottom of the quilt top.
7. Stitch the 72 ½" brown paw print strips cut in step 3 to the right and left sides of the quilt top. Sew the 58 ½" brown paw print strips cut in step 3 to the top and bottom.
8. Stitch the 76 ½" high lengthwise cut black forest print strips to the right and left sides of the quilt top. Trim the selvages from the (4) 7 ½" crosswise cut black forest strips. Sew the strips together end to end to make a long 7 ½" strip. From this long strip cut (2) 72 ½" lengths. Sew these strips to the top and bottom to complete the quilt top.
9. Layer the finished quilt top with batting and backing and quilt as desired.
10. Trim the batting and backing even with the quilt top and bind using the 2 ½" dark brown strips.

# Wilderness Trail Vertical Strip Quilt

## Materials

(9267-99)	Black Forest Print	3 ¼ yards
(9271-33)	Brown Animal Print	2 ¼ yards
(9271-66)	Green Animal Print	2 ¼ yards
(9268-33)	Brown Paw Print	1 ¼ yards
(9268-66)	Green Paw Print	1 ¼ yards
(9270-33)	Dark Brown	1 ⅛ yards
	(includes binding)	
(9272-33)	Dark Plaid	¾ yard
(9272-44)	Light Plaid	¾ yard
(9270-66)	Dark Green	½ yard
(9269-33)	Brown Acorn Print	½ yard
(9269-99)	Black Acorn Print	½ yard
(9267-44)	Cream Forest Print	8 ¾ yards
	(for quilt backing)	

Template Plastic

## Cutting Instructions

*Please note: all strips are cut across the width of the fabric from selvage edge to selvage edge except where noted below.*

### From the black forest print, cut:

- (4) 7 ½" strips. Refold the remaining yardage and cut (2) 7 ½" wide x 80 ½" high **lengthwise** strips.

### From EACH of the brown and green animal prints, cut:

- (2) 8 ½" wide x 72 ½" high **lengthwise** strips.

### From the brown paw print, cut:

- (20) 2" strips.

### From the green paw print, cut:

- (2) 6 ½" strips.
- (8) 3" strips.

### From the dark brown, cut:

- (2) 3 ½" strips. Recut into (24) 2" x 3 ½" pieces.
- (10) 2 ½" strips for the binding.

### From EACH of the dark and light plaids, cut:

- (2) 6 ½" strips.
- (2) 3 ½" strips. Recut into (24) 2 ¾" x 3 ½" pieces.

### From the dark green, cut:

- (2) 6 ½" strips.

### From EACH of the brown acorn print and the black acorn print, cut:

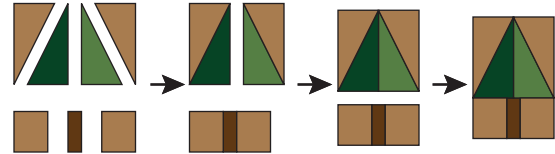
- (1) 9 ½" strips. Recut into (12) 3 ½" x 9 ½" pieces.

## Sewing Instructions

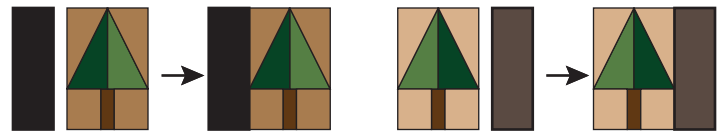
*All seams are sewn using 1/4" seam allowance with pieces held right sides together and raw edges even.*

- Using template plastic and the paper pattern provided, make a template for Triangle A. Cut (12) Triangle A from EACH of the: dark plaid, light plaid, green paw print, and dark green. Turn the template upside down and cut (12) Triangle A Reverse from EACH of the: dark plaid, light plaid, green paw print, and dark green.

- Stitch a green paw print Triangle A to a dark plaid Triangle A. Stitch a dark green Triangle A Reverse to a dark plaid Triangle A Reverse. Stitch the two units together to make (1) tree unit. Stitch 2 ¾" x 3 ½" dark plaid pieces to each long side of a 2" x 3 ½" dark brown piece to make (1) trunk unit. Stitch the trunk unit to the bottom of the tree unit to make one 6 ½" x 9 ½" tree block. Repeat to make a total of (12) identical dark plaid blocks. Repeat this procedure substituting light plaid triangles for the dark plaid to make a total of (12) identical light plaid blocks.



- Stitch a 3 ½" x 9 ½" black acorn print piece to the left hand side of each dark plaid tree block. Stitch a 3 ½" x 9 ½" brown acorn print piece to the right hand side of each light plaid block.



- Referring to the quilt pictured on the cover for correct fabric placement, stitch (4) dark plaid and (4) light plaid tree blocks end to end, alternating the two types of blocks. Repeat to make a total of (3) 9 ½" wide x 72 ½" high pieced strips.

## Quilt Assembly

- Trim the selvages from the 2" brown paw print strips. Sew (2) strips together end to end to make a long 2" strip. Repeat to make (10) long 2" strips. Trim (8) strips to 72 ½" long. Trim (2) strips to 71 ½" long.
- Referring to the quilt pictured on the cover, stitch together (8) 72 ½" brown paw print strips, (2) 8 ½" x 72 ½" brown animal print strips, (2) 8 ½" x 72 ½" green animal print strips, and the (3) strips composed of the tree blocks.
- Stitch the 2" x 71 ½" brown paw print strips to the top and bottom of the quilt top.
- Trim the selvages from the 3" green paw print strips and sew the strips end to end to make a long 3" strip. From this long strip, cut (2) 76 ½" and (2) 75 ½" lengths. Stitch the 75 ½" strips to the right and left sides of the quilt top. Sew the 76 ½" strips to the top and bottom.
- Stitch the 7 ½" x 80 ½" black animal print strips to the right and left sides of the quilt top. Trim the selvages from the 7 ½" crosswise cut black animal print strips and sew the strips together end to end to make a long 7 ½" strip. From this long strip, cut (2) 90 ½" lengths. Sew these pieces to the top and bottom to complete the quilt top.
- Layer the completed quilt top with batting and backing and quilt as desired.
- Trim the batting and backing even with the quilt top and bind using the 2 ½" dark brown strips.

Triangle A Template