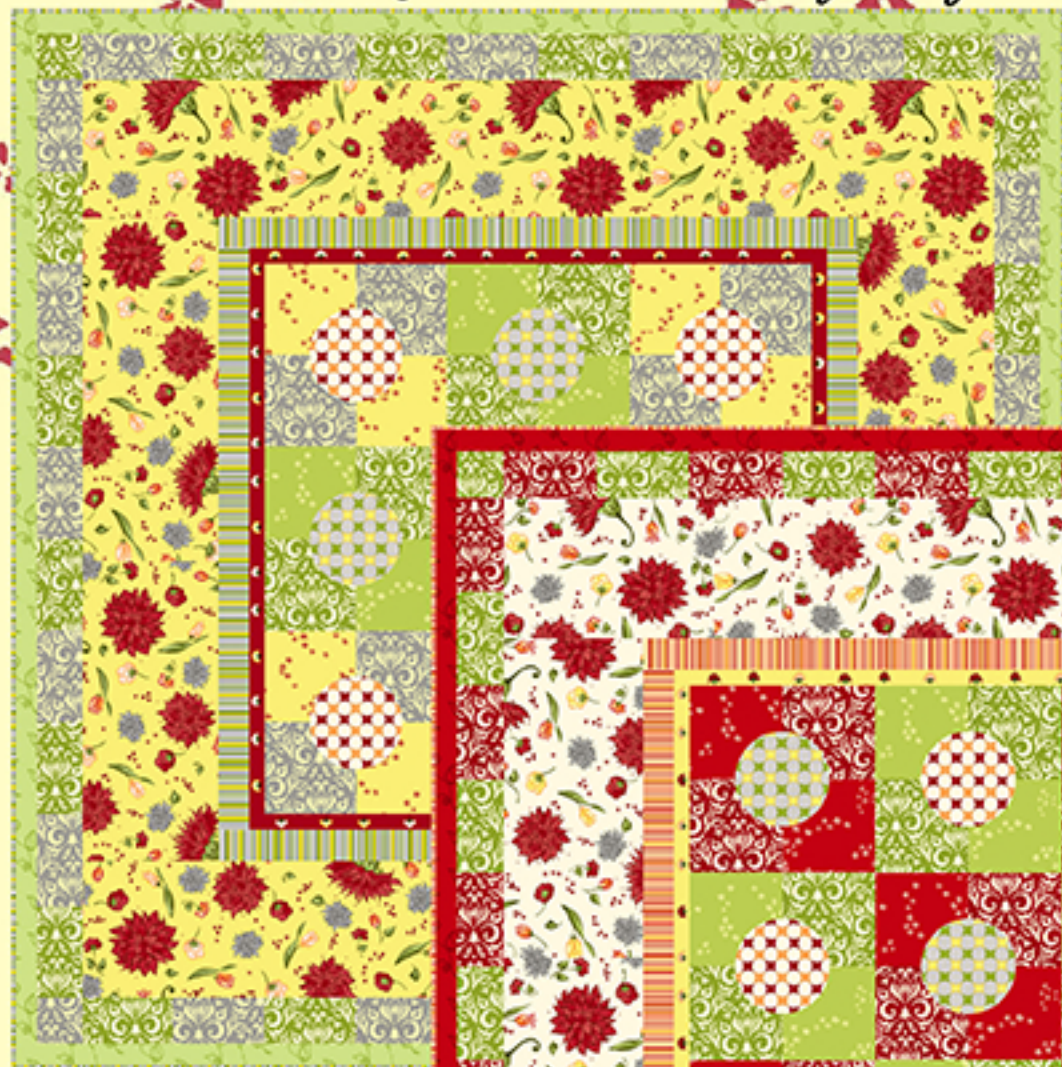


Thistledown

Quilt and Fabrics Designed by Jill Finley



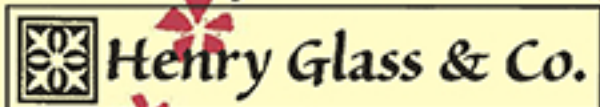
Green Version



Red Version



Finished Quilt Size: 69" x 69"
Free Project Sheet From

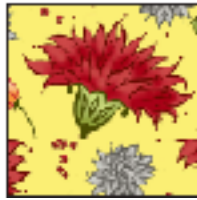


49 West 37th Street
New York, NY 10018
tel: 212-686-5194
fax: 212-532-3525
New York: 800-294-9495
www.henryglassfabrics.com

Thistledown



5426-4
Large Cream
Floral Print



5426-44
Large Yellow
Floral Print



5427-64
Green Scroll
Print



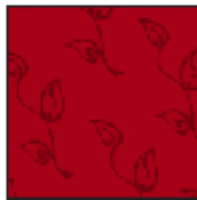
5427-84
Red Scroll
Print



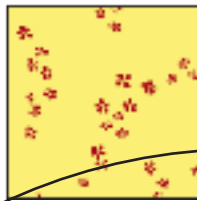
5427-94
Grey Scroll
Print



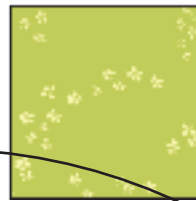
5428-66
Green Tonal



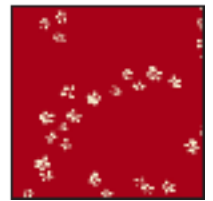
5428-88
Red Tonal



5429-44
Yellow Scattered
Flowers



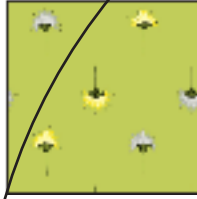
5429-66
Green Scattered
Flowers



5429-88
Red Scattered
Flowers



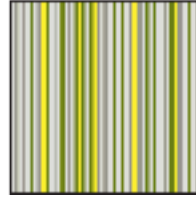
5430-44
Yellow Bud
Print



5430-66
Green Bud
Print



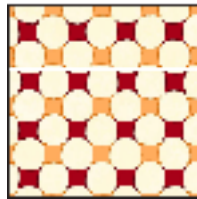
5430-88
Red Bud
Print



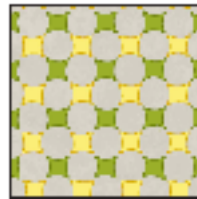
5431-69
Grey Stripe



5431-84
Red Stripe



5432-83
Cream Mosaic



5432-93
Grey Mosaic

CIRCLE TEMPLATE

*(Be sure to select the "do not scale"
option when printing this page.)*

Materials

7/8 yard	Green Scroll Print	(5427-64)
7/8 yard	Red Scroll Print	(5427-84)
1/2 yard	Green Scattered Flowers	(5429-66)
1/2 yard	Red Scattered Flowers	(5429-88)
3/8 yard	Yellow Bud Print	(5430-44)
1 yard	Red Stripe	(5431-84)
1 7/8 yards	Large Cream Floral	(5426-4)
1/2 yard	Red Tonal	(5428-88)
1/4 yard	Cream Mosaic	(5432-83)
1/4 yard	Grey Mosaic	(5432-93)
4 1/2 yards	Coordinating Fabric for Quilt Backing	(5426-44)

Thread to match appliqué

Template plastic

Usual sewing and rotary cutting supplies

3/4 yard of 20" wide, lightweight, double-sided, fusible webbing for fusible appliqué

OR

Freezer paper and spray starch for other appliqué methods.

Cutting Instructions

Please note: all strips are cut across the width of the fabric from selvage edge to selvage edge.

From EACH of the green and red scroll prints, cut:

- (2) 6 1/2" strips. Recut into (10) 6 1/2" x 6 1/2" squares.
- (4) 3 1/2" strips. Recut into (20) 3 1/2" x 6 1/2" pieces and (2) 3 1/2" x 3 1/2" squares.

From EACH of the green and red scattered flowers, cut:

- (2) 6 1/2" strips. Recut into (10) 6 1/2" x 6 1/2" squares.

From the yellow bud print, fussy cut:

- (4) 1 1/2" strips with a row of flower head motifs vertically centered in each strip.

From the red stripe, cut:

- (5) 2 1/2" strips for the second border.
- (7) 2 1/4" strips for the binding.

From the large cream floral, cut:

- (6) 9 1/2" strips for the third border.

From the red tonal, cut:

- (7) 2" strips for the fifth border.

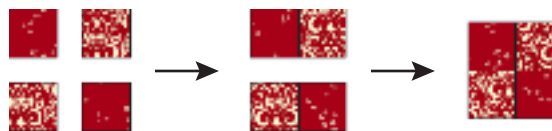
Reserve Cream and Grey Mosaic Prints for appliqué.

Sewing Instructions

All seams are sewn using 1/4" seam allowance with pieces held right sides together and raw edges even.

1. Stitch a 6 1/2" red scroll print square to a 6 1/2" red scattered flowers square as shown in the diagram at the top of the next column. Repeat once. Sew the two units together as shown to make (1) 12 1/2" four-patch block. Repeat to make a total of (5) blocks.

Step 1 (cont.).



2. Repeat the procedure from step 1 to make a total of (4) green scroll print and green scattered flowers four-patch blocks.
3. Using template plastic and the paper pattern provided on the swatch page, make a template for the 6" wide circle motif.
4. Prepare (5) grey mosaic circles and (4) cream mosaic circles as necessary for your preferred appliqué method.
5. Center a grey mosaic circle on top of a red four-patch block. Appliqué the circle in place using the method of your choice. Repeat for each red four-patch. In the same manner, appliqué a cream mosaic circle to the center of each green four-patch block.

Quilt Assembly

1. Referring to the quilt pictured on the cover, arrange the blocks into (3) rows with (3) blocks in each row, alternating the two types of blocks. Stitch the blocks into rows and sew the rows together to complete the quilt center.
2. Trim (2) 1 1/2" yellow bud print strips to 36 1/2". Stitch to the left and right sides of the quilt top. Trim (2) 1 1/2" yellow bud print strips to 38 1/2". Stitch these strips to the top and bottom.
3. Trim (2) 2 1/2" red stripe strips to 38 1/2". Stitch to the left and right sides of the quilt top. Trim the selvages from the (3) remaining 2 1/2" red stripe strips and sew the strips together end to end to make a long 2 1/2" strip. From this long strip, cut (2) 42 1/2" lengths. Stitch these pieces to the top and bottom of the quilt top.
4. Trim the selvages from the 9 1/2" large cream floral strips. Sew the strips together end to end to make a long 9 1/2" strip. From this long strip, cut (2) 60 1/2" and (2) 42 1/2" lengths. Stitch the shorter pieces to the left and right sides of the quilt top. Sew the longer pieces to the top and bottom.
5. Stitch together (5) 3 1/2" x 6 1/2" red scroll print and (5) 3 1/2" x 6 1/2" green scroll print pieces, alternating the two different units to make a long 3 1/2" wide pieced border. Repeat to make a total of (4) units. Stitch (2) of these pieced borders to the left and right sides of the quilt top, noting orientation.
6. Stitch a 3 1/2" green scroll print square to the 3 1/2" x 6 1/2" red scroll print piece on the end of one of the remaining units from step 5. Sew a 3 1/2" red scroll print square to the opposite end of the pieced border. Repeat to make a second unit. Stitch these units to the top and bottom of the quilt top, noting orientation.
7. Trim the selvages from the 2" red tonal strips and sew the strips together end to end to make a long 2" strip. From this long strip, cut (2) 69 1/2" and (2) 66 1/2" lengths. Stitch the shorter lengths to the left and right sides of the quilt top. Sew the longer pieces to the top and bottom.
8. Layer the completed quilt top with batting and backing and quilt as desired.
9. Trim the finished quilt and bind using the 2 1/4" red stripe strips.

Thistle-down

Green Version

Materials

7/8 yard	Green Scroll Print	(5427-64)
7/8 yard	Grey Scroll Print	(5427-94)
1/2 yard	Green Scattered Flowers	(5429-66)
1/2 yard	Yellow Scattered Flowers	(5429-44)
3/8 yard	Red Bud Print	(5430-88)
1 yard	Grey Stripe	(5431-69)
1 7/8 yards	Large Yellow Floral	(5426-44)
1/2 yard	Green Tonal	(5428-66)
1/4 yard	Cream Mosaic	(5432-83)
1/4 yard	Grey Mosaic	(5432-93)
4 1/2 yards	Coordinating Fabric for Quilt Backing	(5426-4)

Thread to match appliqué

Template plastic

Usual sewing and rotary cutting supplies

3/4 yard of 20" wide, lightweight, double-sided, fusible webbing for fusible appliqué

OR

Freezer paper and spray starch for other appliqué methods

Cutting Instructions

Please note: all strips are cut across the width of the fabric from selvage edge to selvage edge.

From EACH of the green and grey scroll prints, cut:

- (2) 6 1/2" strips. Recut into (10) 6 1/2" x 6 1/2" squares.
- (4) 3 1/2" strips. Recut into (20) 3 1/2" x 6 1/2" pieces and (2) 3 1/2" x 3 1/2" squares.

From EACH of the green and yellow scattered flowers, cut:

- (2) 6 1/2" strips. Recut into (10) 6 1/2" x 6 1/2" squares.

From the red bud print, fussy cut:

- (4) 1 1/2" strips with a row of flower head motifs vertically centered in each strip.

From the grey stripe, cut:

- (5) 2 1/2" strips for the second border.
- (7) 2 1/4" strips for the binding.

From the large yellow floral, cut:

- (6) 9 1/2" strips for the third border.

From the green tonal, cut:

- (7) 2" strips for the fifth border.

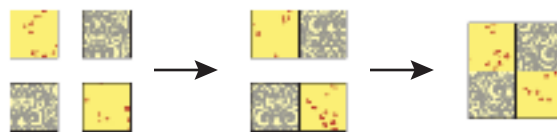
Reserve Cream and Grey Mosaic Prints for appliqué.

Sewing Instructions

All seams are sewn using 1/4" seam allowance with pieces held right sides together and raw edges even.

1. Stitch a 6 1/2" grey scroll print square to a 6 1/2" yellow scattered flowers square as shown in the diagram at the top of the next column. Repeat once. Sew the two units together as shown to make (1) 12 1/2" four-patch block. Repeat to make a total of (5) blocks.

Step 1 (cont.).



2. Repeat the procedure from step 1 to make a total of (4) green scroll print and green scattered flowers four-patch blocks.
3. Using template plastic and the paper pattern provided on the swatch page, make a template for the 6" wide circle motif.
4. Prepare (5) cream mosaic circles and (4) grey mosaic circles as necessary for your preferred appliqué method.
5. Center a cream mosaic circle on top of a grey four-patch block. Appliqué the circle in place using the method of your choice. Repeat for each grey four-patch. In the same manner, appliqué a grey mosaic circle to the center of each green four-patch block.

Quilt Assembly

1. Referring to the quilt pictured on the cover, arrange the blocks into (3) rows with (3) blocks in each row, alternating the two types of blocks. Stitch the blocks into rows and sew the rows together to complete the quilt center.
2. Trim (2) 1 1/2" red bud print strips to 36 1/2". Stitch to the left and right sides of the quilt top. Trim (2) 1 1/2" red bud print strips to 38 1/2". Stitch these strips to the top and bottom.
3. Trim (2) 2 1/2" grey stripe strips to 38 1/2". Stitch to the left and right sides of the quilt top. Trim the selvages from the (3) remaining 2 1/2" grey stripe strips and sew the strips together end to end to make a long 2 1/2" strip. From this long strip, cut (2) 42 1/2" lengths. Stitch these pieces to the top and bottom of the quilt top.
4. Trim the selvages from the 9 1/2" large yellow floral strips. Sew the strips together end to end to make a long 9 1/2" strip. From this long strip, cut (2) 60 1/2" and (2) 42 1/2" lengths. Stitch the shorter pieces to the left and right sides of the quilt top. Sew the longer pieces to the top and bottom.
5. Stitch together (5) 3 1/2" x 6 1/2" grey scroll print and (5) 3 1/2" x 6 1/2" green scroll print pieces, alternating the two different units, to make a long 3 1/2" wide pieced border. Repeat to make a total of (4) units. Stitch (2) of these pieced borders to the left and right sides of the quilt top, noting orientation.
6. Stitch a 3 1/2" green scroll print square to the 3 1/2" x 6 1/2" grey scroll print piece on the end of one of the remaining units from step 5. Sew a 3 1/2" grey scroll print square to the opposite end of the pieced border. Repeat to make a second unit. Stitch these units to the top and bottom of the quilt top, noting orientation.
7. Trim the selvages from the 2" green tonal strips and sew the strips together end to end to make a long 2" strip. From this long strip, cut (2) 69 1/2" and (2) 66 1/2" lengths. Stitch the shorter lengths to the left and right sides of the quilt top. Sew the longer pieces to the top and bottom.
8. Layer the completed quilt top with batting and backing and quilt as desired.
9. Trim the finished quilt and bind using the 2 1/4" grey stripe strips.