

Nine Dots



Large Quilt Finished Size: 76" x 84"

A Free Pattern Sheet Featuring
Fabrics and Quilts Designed by
Carrie Nelson

MISS ROSIE'S
QUILT CO.

Small Quilt Finished Size:
36 1/2" x 48 1/2"



49 West 37th Street, New York, NY 10018

tel: 212-686-5194 fax: 212-532-3525

Toll Free: 800-294-9495

www.henryglassfabrics.com

 Henry Glass & Co., Inc

facebook

Nine Dots

Finished Quilt Size (Large Version): 76" x 84"
Finished Quilt Size (Small Version): 36 ½" x 48 ½"

Fabrics in the Collection



5473-11
Blue Floral



5473-22
Pink Floral



5473-44
Yellow Floral



5474-11
Blue Circles



5474-22
Pink Circles



5474-44
Yellow Circles



5475-16
Blue Squares



5475-41
Yellow Squares



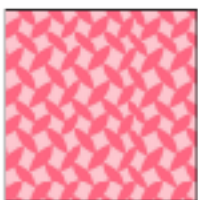
5475-92
Grey Squares



5476-11
Blue Mosaic



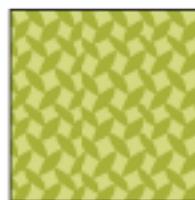
5476-22
Pink Mosaic



5477-22
Pink Tonal



5477-44
Yellow Tonal



5477-66
Green Tonal



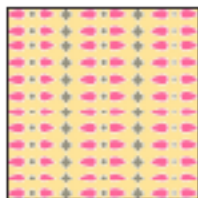
5477-99
Gray Tonal



5478-66
Green Floral



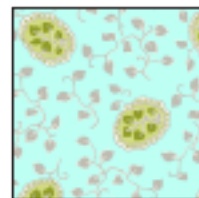
5478-99
Gray Floral



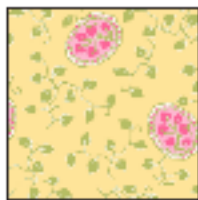
5479-44
Yellow Stripe



5479-99
Gray Stripe



5480-11
Blue Leaves



5480-44
Yellow Leaves

Nine Dots

Materials List

5454-01w
5477-99

White Tonal 4 ½ yards
Gray Tonal ¾ yard
(for binding)

5473-11, 5473-22, 5473-44,
5474-11, 5474-22, 5474-44,
5475-16, 5475-41, 5475-92,
5476-11, 5476-22, 5477-22,
5477-44, 5477-66, 5477-99
5478-66, 5478-99, 5479-44,
5479-99, 5480-11, 5480-44
5473-11

One fat quarter EACH

Blue Floral 5 ⅜ yards
(for quilt backing)

Cutting Instructions

Please note: all strips are cut across the width of the fabric from selvage edge to selvage edge.

From the white tonal, cut:

- (2) 4 ½" strips. Recut into (8) 4 ½" x 8 ½" pieces.
- (58) 2 ½" strips. Recut (16) strips into (136) 2 ½" x 4 ½" pieces. Recut (34) strips into (544) 2 ½" x 2 ½" squares. Set aside (8) strips for the inner border.

From the gray tonal, cut:

- (9) 2 ¼" strips for the binding.

From EACH of (13) of the assorted fat quarters, cut:

- (1) 4 ½" strip. Recut into (4) 4 ½" x 4 ½" squares.
- (5) 2 ½" strips. Recut (3) strips into (12) 2 ½" x 4 ½" pieces. Recut (2) strips into (16) 2 ½" x 2 ½" squares.

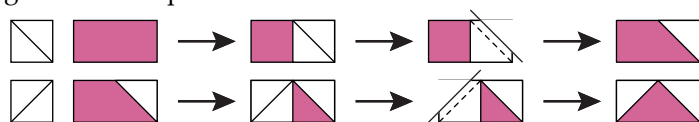
From EACH of (8) of the assorted fat quarters, cut:

- (1) 4 ½" strip. Recut into (2) 4 ½" x 4 ½" squares and (4) 2 ½" x 4 ½" pieces.
- (5) 2 ½" strips. Recut (4) strips into (16) 2 ½" x 4 ½" pieces. Recut (1) strip into (8) 2 ½" x 2 ½" squares.

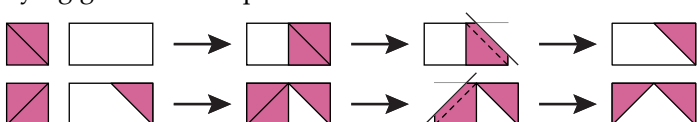
Sewing Instructions

All seams are sewn using 1/4" seam allowance with pieces held right sides together and raw edges even.

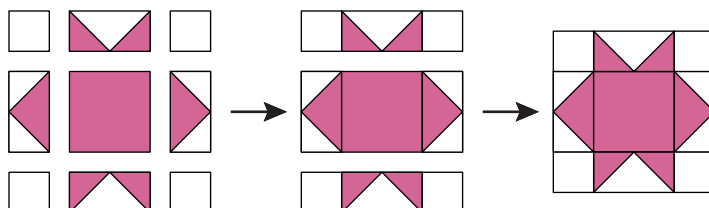
1. Draw diagonal lines on the wrong sides of (2) 2 ½" white tonal squares. Layer a marked square on one end of a 2 ½" x 4 ½" pink tonal piece, right sides together. Sew on the marked line. Trim 1/4" beyond the seam line and press the white triangle up. Repeat this procedure for the opposite end of the pink tonal piece as shown to make (1) pink flying geese unit. Repeat to make a second unit.



2. Draw diagonal lines on the wrong sides of (2) 2 ½" pink tonal squares. Layer a marked square on one end of a 2 ½" x 4 ½" white tonal piece, right sides together. Sew on the marked line. Trim 1/4" beyond the seam line and press the white triangle up. Repeat this procedure for the opposite end of the white tonal piece as shown to make (1) white flying geese unit. Repeat to make a second unit.



3. Stitch the pink flying geese units from step 1 to opposite sides of a 4 ½" pink tonal square, noting orientation. Sew 2 ½" white tonal squares to each end of each of the white flying geese units from step 2. Stitch these units to the top and bottom of the 4 ½" pink tonal square, again noting orientation. The block should measure 8 ½" from raw edge to raw edge in both directions.



4. Repeat steps 1-3 to make a total of (68) blocks.

Quilt Assembly and Finishing

1. Referring to the larger quilt pictured on the cover, stitch (8) blocks together side by side to make Row 1 of the quilt top. Repeat this procedure to make Rows 3, 5, 7, and 9.
2. Stitch (7) blocks together side by side. Sew a 4 ½" x 8 ½" white tonal piece to each end of the row to make an 8 ½" x 64 ½" unit for Row 2. Repeat this procedure to make Rows 4, 6, and 8.
3. Sew the rows of blocks together alternating the units from steps 1 and 2 as seen in the quilt pictured on the cover.
4. Trim the selvages from the 2 ½" white tonal strips set aside for the inner border. Sew the strips together end to end to make a long 2 ½" strip. Cut this long strip into (2) 72 ½" and (2) 68 ½" lengths. Sew the longer pieces to the left and right sides of the quilt top. Sew the shorter pieces to the top and bottom.
5. Stitch together (38) 2 ½" x 4 ½" colored pieces to make a 4 ½" x 76 ½" pieced border. Repeat to make a second unit. Sew these pieced borders to the left and right sides of the quilt top.
6. Stitch together (34) 2 ½" x 4 ½" colored pieces to make a 4 ½" x 68 ½" pieced border. Trim (16) of the remaining 2 ½" x 4 ½" colored pieces to 2 ½" x 2 ½". Sew (4) of these squares together as shown to make (1) four-patch block.



- Repeat to make a total of (4) blocks. Sew a four-patch block to each end of each of the 68 ½" long pieced border units. Stitch these pieced borders to the top and bottom to complete the quilt top.
7. Layer the quilt top with batting and backing and quilt as desired.
8. Bind the finished quilt using the 2 ¼" gray tonal strips.

Nine Dots

Small Quilt
Finished Block Size: 6" x 6"

Materials List

5454-01w	White Tonal	1 ½ yards
5477-99	Gray Tonal	½ yard
	(for binding)	
5473-11, 5473-22, 5473-44, 5474-11, 5474-22, 5474-44, 5475-16, 5475-41, 5475-92, 5476-11, 5476-22, 5477-22, 5477-44, 5477-66, 5477-99, 5478-66, 5478-99, 5479-44, 5479-99, 5480-11, 5480-44 5473-11	One 6" x 21" strip EACH	
	Blue Floral	1 ⅝ yards
	(for quilt backing)	

Cutting Instructions

Please note: all strips are cut across the width of the fabric from selvage edge to selvage edge.

From the white tonal, cut:

- (1) 3 ½" strip. Recut into (6) 3 ½" x 6 ½" pieces.
- (19) 2" strips. Recut (6) strips into (64) 2" x 3 ½" pieces.
Recut (13) strips into (256) 2" x 2" squares.
- (4) 1 ½" strips for the inner border.

From the gray tonal, cut:

- (5) 2 ¼" strips for the binding.

From EACH of (16) of the assorted 6" x 21" strips, cut:

- (1) 3 ½" strip. Recut into (2) 3 ½" x 3 ½" squares, (4) 2" wide x 3 ½" high pieces, and (3) 1 ½" wide x 3 ½" high pieces. Trim the 1 ½" x 3 ½" pieces to 1 ½" x 2 ¾" and set these aside for the outer border.
- (1) 2" strip. Recut into (8) 2" x 2" squares and (1) 2" x 2 ¾" piece. Trim the 2" x 2 ¾" piece to 1 ½" x 2 ¾" and set aside for the outer border.

From EACH of (4) of the assorted fat quarters, cut:

- (3) 1 ½" strips. Recut into (21) 1 ½" x 2 ¾" pieces for the outer border.

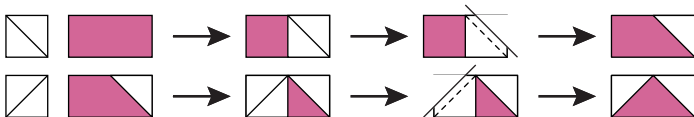
From (1) of the assorted fat quarters, cut:

- (1) 2 ¾" strip. Recut into (4) 2 ¾" x 2 ¾" squares and (6) 1 ½" x 2 ¾" pieces for the outer border.
- (1) 1 ½" strip. Recut into (7) 1 ½" x 2 ¾" pieces for the outer border.

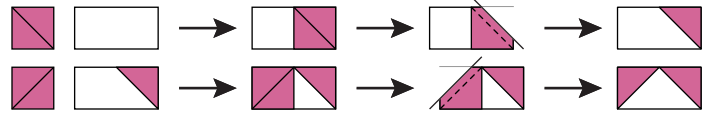
Sewing Instructions

All seams are sewn using 1/4" seam allowance with pieces held right sides together and raw edges even.

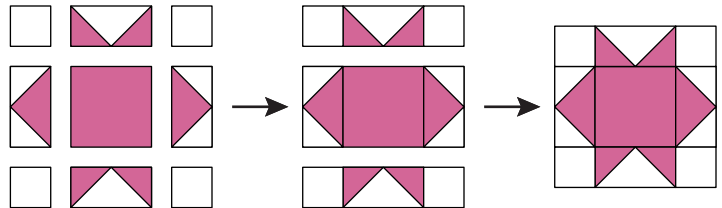
- Draw diagonal lines on the wrong sides of (2) 2" white tonal squares. Layer a marked square on one end of a 2" x 3 ½" pink tonal piece, right sides together. Sew on the marked line. Trim 1/4" beyond the seam line and press the white triangle up. Repeat this procedure for the opposite end of the pink tonal piece as shown to make (1) pink flying geese unit. Repeat to make a second unit.



- Draw diagonal lines on the wrong sides of (2) 2" pink tonal squares. Layer a marked square on one end of a 2" x 3 ½" white tonal piece, right sides together. Sew on the marked line. Trim 1/4" beyond the seam line and press the white triangle up. Repeat this procedure for the opposite end of the white tonal piece as shown to make (1) white flying geese unit. Repeat to make a second unit.



- Stitch the pink flying geese units from step 1 to opposite sides of a 3 ½" pink tonal square, noting orientation. Sew 2" white tonal squares to each end of each of the white flying geese units from step 2. Stitch these units to the top and bottom of the 3 ½" pink tonal square, again noting orientation. The block should measure 6 ½" from raw edge to raw edge in both directions.



- Repeat steps 1-3 to make a total of (32) blocks.

Quilt Assembly and Finishing

- Referring to the smaller quilt pictured on the cover, stitch (5) blocks together side by side to make Row 1 of the quilt top. Repeat this procedure to make Rows 3, 5, and 7.
- Stitch (4) blocks together side by side. Sew a 3 ½" x 6 ½" white tonal piece to each end of the row to make a 6 ½" x 30 ½" unit for Row 2. Repeat this procedure to make Rows 4 and 6.
- Sew the rows of blocks together alternating the units from steps 1 and 2 as seen in the quilt pictured on the cover.
- Trim the selvages from the 1 ½" white tonal strips set aside for the inner border. Sew the strips together end to end to make a long 1 ½" strip. Cut this long strip into (2) 42 ½" and (2) 32 ½" lengths. Sew the longer pieces to the left and right sides of the quilt top. Sew the shorter pieces to the top and bottom.
- Stitch together (44) 1 ½" x 2 ¾" colored pieces to make a 2 ¾" x 44 ½" pieced border. Repeat to make a second unit. Sew these pieced borders to the left and right sides of the quilt top.
- Stitch together (32) 1 ½" x 2 ¾" colored pieces to make a 2 ¾" x 32 ½" pieced border. Sew a 2 ¾" square to each end of each pieced border. Sew these pieced borders to the top and bottom to complete the quilt top.
- Layer the quilt top with batting and backing and quilt as desired.
- Bind the finished quilt using the 2 ¼" gray tonal strips.