



# The Great "I Am"



Fabric Designed by Leanne Anderson of The Whole Country Caboodle



60" X 60"



Henry Glass & Co.



49 West 37th Street  
New York, NY 10018  
tel: 212-686-5194 fax: 212-532-3525  
New York: 800-294-9495  
[www.henryglassfabrics.com](http://www.henryglassfabrics.com)

To view the entire collection and download a free pattern, please visit our website at [www.henryglassfabrics.com](http://www.henryglassfabrics.com)

©2010 Henry Glass & Co.



# The Great "I Am"

60" x 60"

Fabric Designed by Leanne Anderson of the Whole Country Caboodle  
Quilt designed by Sue Falkowski



7450-33



7451-33



7452-44  
Suggested  
Back  
3 1/2 yds



7452-88  
3/8 yd



7453-33  
1/8 yd



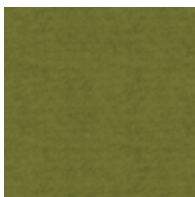
7453-88  
3/8 yd



7453-99  
1 yd



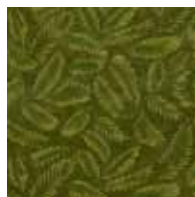
7454-33  
1/4 yd



7454-66  
1/2 yd



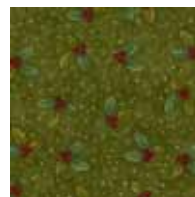
7455-33  
1/4 yd



7455-66  
1/4 yd



7456-44  
3/8 yd



7456-66  
1/4 yd



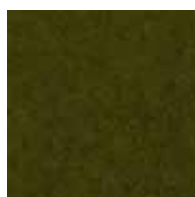
7456-88  
3/8 yd



7457-66  
1/2 yd



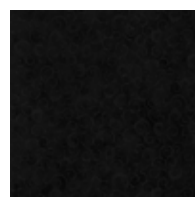
7457-99



7458-66  
1/8 yd



7458-88



7458-99

Henry Glass & Co  
[www.henryglassfabrics.com](http://www.henryglassfabrics.com)

# The Great "I Am"

60" x 60"

Fabric Designed by Leanne Anderson of the Whole Country Caboodle  
Quilt designed by Sue Falkowski

## FABRIC REQUIREMENTS

7450-33 Panel	One Panel
7452-88 Red Character Toss	3/8 yd
7453-88 Red Star Toss	3/8 yd
7453-99 Black Star Toss	1 yd
7453-33 Gold Star Toss	1/8 yd
7454-33 Gold Star	1/4 yd
7454-66 Green Star	1/2 yd

7455-66 Green Pine Bough	1/4 yd
7455-33 Gold Pine Bough	1/4 yd
7456-44 Cream Holly Berry	3/8 yd
7456-66 Green Holly Berry	1/4 yd
7456-88 Red Holly Berry	3/8 yd
7457-66 Green Stripe	1/2 yd
7458-66 Green Swirl	1/8 yd
7452-44 Cream Character Toss	3-1/2 yds backing
Binding	5/8 yd

## CUTTING REQUIREMENTS

Cut panel pictures into (12) 6 1/2" squares. Some of the pictures have text close to the right edge. Align your ruler so you have about 1/4" to the right of the pictures for seam allowance. See the picture below as a guide.



Seam allowances = 1/4"  
wof = width of fabric  
Please read through instructions before beginning.

### Red Star Toss 7453-88

- (1) 2" x wof strip, sub cut into:
  - (8) 2" squares for corner blocks
- (5) 1 1/2" x wof strips, sub cut into:
  - (26) 1 1/2" x 6 1/2" strips for blocks

### Gold Star Toss 7453-33

- (1) 2 1/2" x wof strip, sub cut into:
  - (13) 2 1/2" squares for trees

### Gold Star 7454-33

- (3) 2 1/2" x wof strips, sub cut into:
  - (26) 2 1/2" x 2 1/4" rectangles for trees

### Green Star 7454-66

- (10) 1 1/2" x wof strips, sub cut into:
  - (60) 1 1/2" x 6 1/2" strips for sashing

### Green Pine Bough 7455-66

- (2) 2 1/2" x wof strips, sub cut into:
  - (13) 2 1/2" x 4 1/2" rectangles for trees

### Gold Pine Bough 7455-33

- (1) 2 1/2" x wof strip, sub cut into:
  - (13) 2 1/2" squares for trees
- (2) 1 1/2" x wof strips, sub cut into:
  - (52) 1 1/2" squares for posts and corner blocks
- (1) 2" x wof strip, sub cut into:
  - (8) 2" squares for corner blocks

### Green Swirl 7458-66

- (1) 1" x 2 1/2" strips, sub cut into:
  - (13) 1" x 2 1/2" strips for tree trunks

### Green Holly Berry 7456-66

- (2) 2 1/2" x wof strips, sub cut into:
  - (13) 2 1/2" x 4 1/2" squares for trees

### Red Character Toss 7452-88

- (2) 2 1/2" x 36 1/2" strips for 1st border
- (2) 2 1/2" x 40 1/2" strips for 1st border

### Green Stripe 7457-66

- (2) 3 1/2" x 40 1/2" strips for 2nd border
- (2) 3 1/2" x 40 1/2" strips for 2nd border

### Red Holly Berry 7456-88

- (5) 2 1/2" x wof strips, pieced together end to end and cut into:

- (2) 2 1/2" x 46 1/2" strips for 3rd border
- (2) 2 1/2" x 50 1/2" strips for 3rd border

### Cream Holly Berry 7456-44

- (6) 1 1/2" x wof strips, pieced together end to end and cut into:

- (2) 1 1/2" x 50 1/2" strips for 4th border
- (2) 1 1/2" x 52 1/2" strips for 4th border

### Black Star Toss 7453-99

- (6) 4 1/2" x wof strips, pieced together end to end and cut:

- (2) 4 1/2" x 52 1/2" for outer border
- (2) 4 1/2" x 60 1/2" for outer border

- (4) 1 1/2" squares for corner blocks

# CONSTRUCTION

## TREE BLOCKS

Each tree block has two flying geese units and a trunk unit.

## FLYING GEESSE

1. Draw a line from corner to corner on the wrong side of (13) 2 ½" gold star toss squares and (13) 2 ½ gold pine bough squares.
2. Place one gold star toss square, right sides together, on one end of a 2 ½" x 4 ½" green holly berry rectangle. Sew along the drawn line. Trim corner away and press. Repeat on the other end of the rectangle. Make 13.
3. Make 13 more flying geese units with gold pine bough squares and green pine bough rectangles.



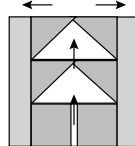
Make 26 total  
(Measures 2 ½" x 4 ½")

Sew 1" x 2 ½" green swirl strip to one side of a 2 ½" x 2 ¼" rectangle. Press. Add a matching green swirl rectangle on the other side to make the tree trunk unit.



Make 13 (Measures 2 ½" x 4 ½")

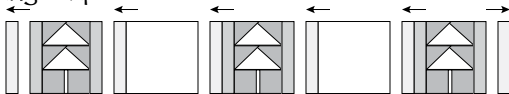
Sew two flying geese units and the tree trunk unit together. Add a 1 ½" x 6 ½" strip red star toss to each side of the tree block. Press toward the red star strips.



Make 13 (Measures 6 ½" unfinished)

## QUILT TOP ASSEMBLY

Arrange your panel squares in the order you like. Sew a 1 ½" x 6 ½" green star sashing strip to the left side of each tree block and each 6 ½" panel square. Press toward the sashing strips.



Sew three rows beginning with a tree block. Add a sashing strip to the end of the row.

Sew two rows beginning with a panel square. Add a sashing strip to the end of the row.

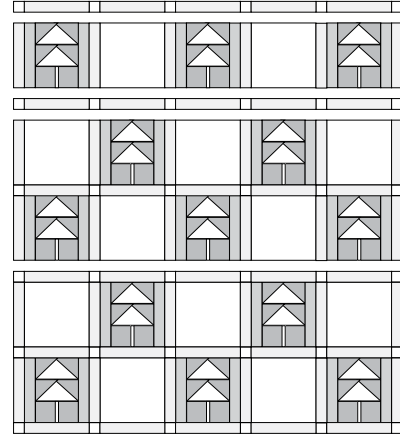


## SASHING

Sew six 1 ½" gold pine bough posts and five 1 ½" x 6 ½" green star strips together. Begin and end with a 1 ½" gold star post. Press toward the sashing strips. Make six sashing rows.



Arrange the pieced block rows and sashing rows as shown and sew together.



## BORDERS

(Press border strips toward the border.)

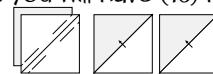
## FIRST BORDER RED CHARACTER TOSS

Sew 2 ½" x 36 ½" strips to the sides of the quilt. Add 2 ½" x 40 ½" strips to the top and bottom.

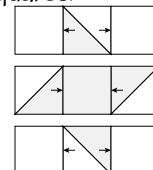
## FRIENDSHIP STAR CORNER BLOCKS (3 ½" UNFINISHED)

Draw a line from corner to corner on the wrong side of (8) 2" gold pine bough squares. Pair the squares with (8) red star toss 2" squares.

Sew ¼" from each side of the drawn line. Cut apart on the line. Trim to measure 1 ½". You will have (16) half square triangles.



Assemble the block as shown with 1 ½" black star center and 1 ½" gold pine bough squares.



Make 4 (Measures 3 ½" unfinished)

## SECOND BORDER GREEN STRIPE AND CORNER BLOCKS

Sew a 3 ½" x 40 ½" green stripe border to each side of the quilt. Sew the friendship stars to each end of the remaining two 3 ½" x 40 ½" green stripe borders. Sew to quilt.

## THIRD BORDER RED HOLLY BERRIES

Add 2 ½" x 46 ½" strips to sides of the quilt. Add 2 ½" x 50 ½" strips to the top and bottom.

## FOURTH BORDER CREAM HOLLY BERRIES

Add 1 ½" x 50 ½" cream holly berry borders to the sides. Add 1 ½" x 52 ½" strips to the top and bottom.

## FIFTH BORDER BLACK STAR TOSS

Add 4 ½" x 52 ½" strips to the sides. Add 4 ½" x 60 ½" strips to the top and bottom.

LAYER, QUILT & BIND.