



# Yellowstone

Quilt designed by Cate Tallman-Evans for Blank Quilting  
Finished Size is 64" x 89"



# Yellowstone

Finished Size: 64" x 89"

Block Size: 8" x 8"

Quilt designed by Cate Tallman-Evans for Blank Quilting

## Fabric Requirements:

**Fabric A:** 3 yds of 6041 Canyon

**Fabric B:** 3/4 yd of 6042 Canyon

**Fabric C:** 1/2 yd of 6043 Canyon

**Fabric D:** 1/2 yd of 5796 Olive

**Fabric E:** 1 yd of 5764 Cocoa

**Fabric F:** 3/4 yd of 3955 Ivory

**Fabric G:** 1-1/4 yds of 5474 Oak

**Fabric H:** 3/4 yd of 5796 Wedgewood

**Fabric I:** 5/8 yd of 5474 Walnut

**Fabric J:** 5/8 yd of 3504 Meadow

**Fabric K:** 5/8 yd of 3504 Palm

**Backing:** 5-5/8 yds of 6042 Canyon

72" x 97" piece of batting

100% cotton thread to blend with fabrics

Usual sewing supplies

**Cutting Instructions:** *All strips are cut across the width of the fabric from selvage edge to selvage edge.*

**From Fabric A:** (7) 8-1/2" strips; fussy cut the strips to center animal motifs vertically in each strip.  
Cut extra strips as needed to disguise seams in pieced borders.

**From Fabric B:** (2) 8-1/2" strips; fussy cut the strips to center animal motifs vertically in each strip.

**From Fabric C:** (1) 8-1/2" strip; fussy cut the strip to center animal motifs vertically in each strip.

**From Fabric D:** (3) 4-1/2" strips. Recut into (20) 4-1/2" x 4-1/2" squares.

**From Fabric E:** (1) 3-3/4" strip. Recut into (14) 2-1/4" x 3-3/4" pieces.

(1) 3" strip. Recut into (14) 2-1/2" x 3" pieces.

(3) 2-1/2" strips.

(8) 2-1/4" strips for binding.

**From Fabric F:** (1) 7" strip. Recut into (8) 3-1/4" x 7" pieces.

(1) 6-1/4" strip. Recut into (8) 2-1/4" x 6-1/4" pieces.

(1) 3-3/4" strip. Recut into (8) 1-7/8" x 3-3/4" pieces.

(2) 2-1/2" strips. Recut (1) strip into (8) 2-1/2" x 2-1/2" squares.

**From Fabric G:** (2) 7" strips. Recut into (20) 3-1/4" x 7" pieces.

(2) 6 1/4" strips. Recut into (20) 2-1/4" x 6-1/4" pieces.

(1) 3-3/4" strip. Recut into (20) 1 7/8" x 3-3/4" pieces.

(4) 2-1/2" strips. Recut (2) strips into (20) 2-1/2" x 2-1/2" squares.

**From Fabric H:** (12) 2" strips.

**From Fabric I:** (6) 3" strips for the middle border.

**From Fabric J:** (2) 7" strips. Recut into (7) 6-1/2" x 7" pieces and (7) 4-1/4" x 6-1/4" pieces.

**From Fabric K:** (2) 7" strips. Recut into (7) 6-1/2" x 7" pieces and (7) 4-1/4" x 6-1/4" pieces.

### Sewing Instructions:

All seams are sewn with right sides together, raw edges even, and 1/4" seam allowance.

#### Make the Double Four-Patch Blocks:

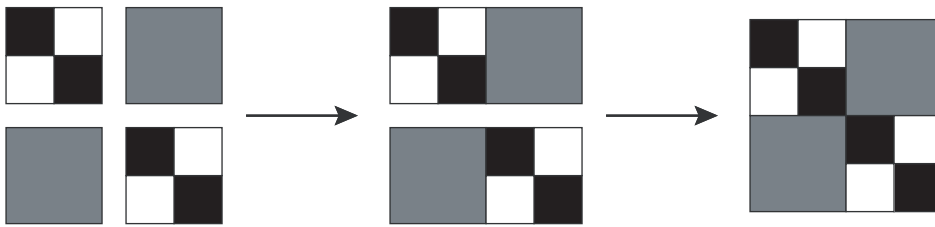
1. Sewing lengthwise, join a 2-1/2" Fabric E Strip to a 2-1/2" Fabric F strip.  
Cut (16) 2-1/2" wide segments from this strip set.



2. Stitch together (2) strip set segments from step 1 to make a four-patch unit as shown. Repeat once.

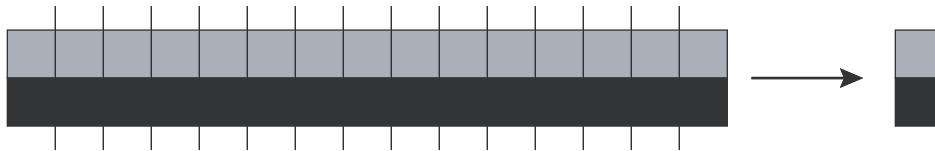


3. Stitch together the four-patch units from step 2 and (2) 4-1/2" Fabric D squares to make (1) double four-patch block, rotating the dark brown squares as shown.



4. Repeat steps 2 and 3 to make a total of (4) Fabric E & F Double Four-Patch Blocks.

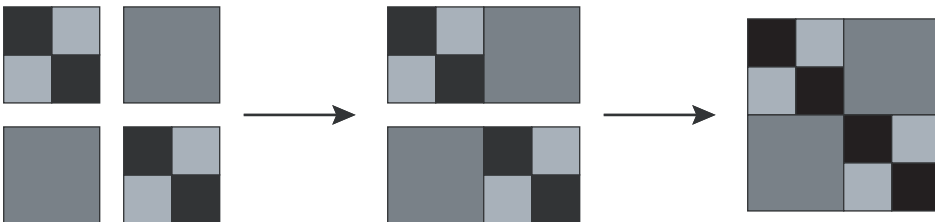
5. Sewing lengthwise, join a 2-1/2" Fabric E Strip to a 2-1/2" Fabric G strip. Repeat to make a second strip set.  
Recut these strip sets into a total of (24) 2-1/2" wide segments.



6. Stitch together (2) strip set segments from step 5 to make a four-patch unit as shown. Repeat once.



7. Stitch together the four-patch units from step 6 and (2) 4-1/2" Fabric D squares to make (1) double four-patch block, rotating the dark brown squares as shown.



8. Repeat steps 6 and 7 to make a total of (6) Fabric E & G Double Four-Patch Blocks.

(Double Tree Blocks instructions on following page.)

### Make the Double Tree Blocks:

Note: basic foundation piecing instructions are not included.

If needed, please find these instructions at your local quilt shop or online.

1. Print out (14) EACH of Foundations 1 and 2 on pages 5 and 6, making sure the "do not scale" option is selected during printing. Foundation 1 should measure 6" wide x 8-1/2" high. Foundation 2 should measure 3" wide x 8-1/2" high.
2. Refer to the charts below for adding the pieces to each foundation in numerical order. Refer to the quilt pictured on the cover for correct fabric placement in each foundation.

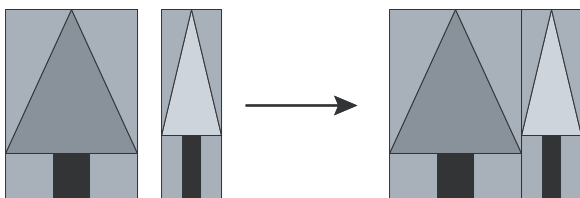
#### Foundation 1

Piece #	Use Fabric Piece
1	2-1/2" square Fabric F or G
2	2-1/2" x 3" piece Fabric E
3	2-1/2" square Fabric F or G
4	6-1/2" x 7" piece Fabric J or K
5	3-1/4" x 7" piece Fabric F or G
6	3-1/4" x 7" piece Fabric F or G

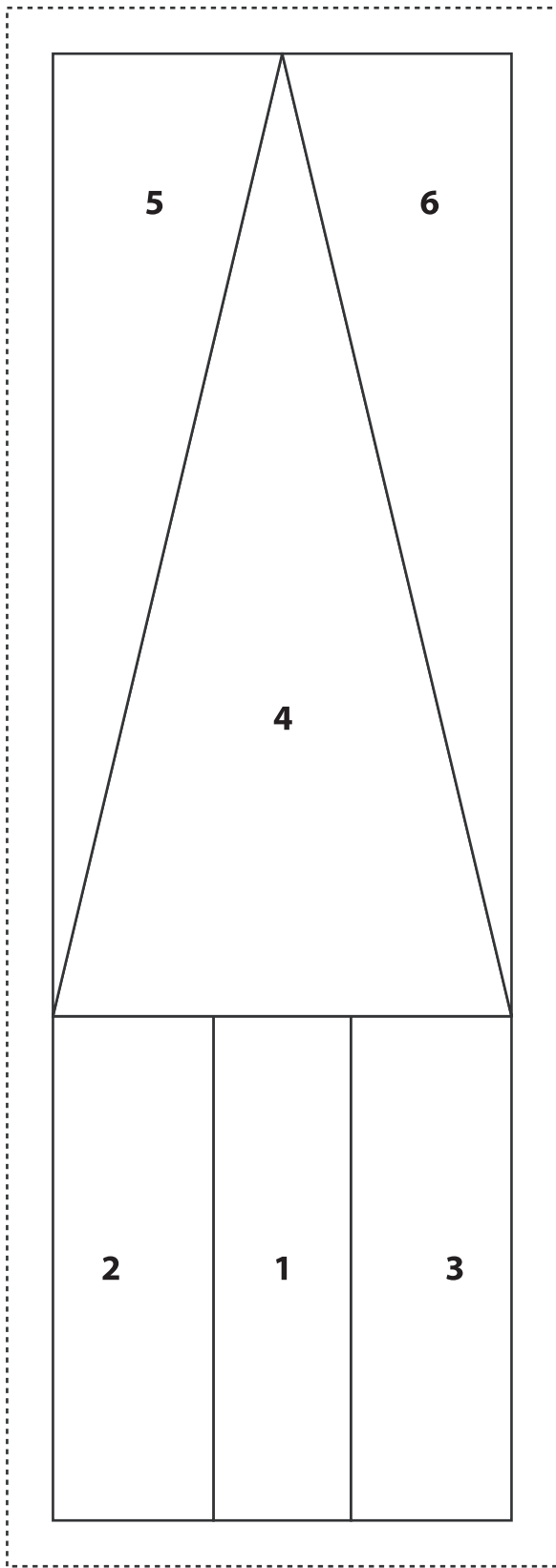
#### Foundation 2

Piece #	Use Fabric Piece
1	1-7/8" x 3-1/4" piece Fabric F or G
2	2-1/4" x 3-1/4" piece Fabric E
3	1-7/8" x 3-1/4" piece Fabric F or G
4	4-1/4" x 6-1/2" piece Fabric J or K
5	2-1/4" x 6-1/4" piece Fabric F or G
6	2-1/4" x 6-1/4" piece Fabric F or G

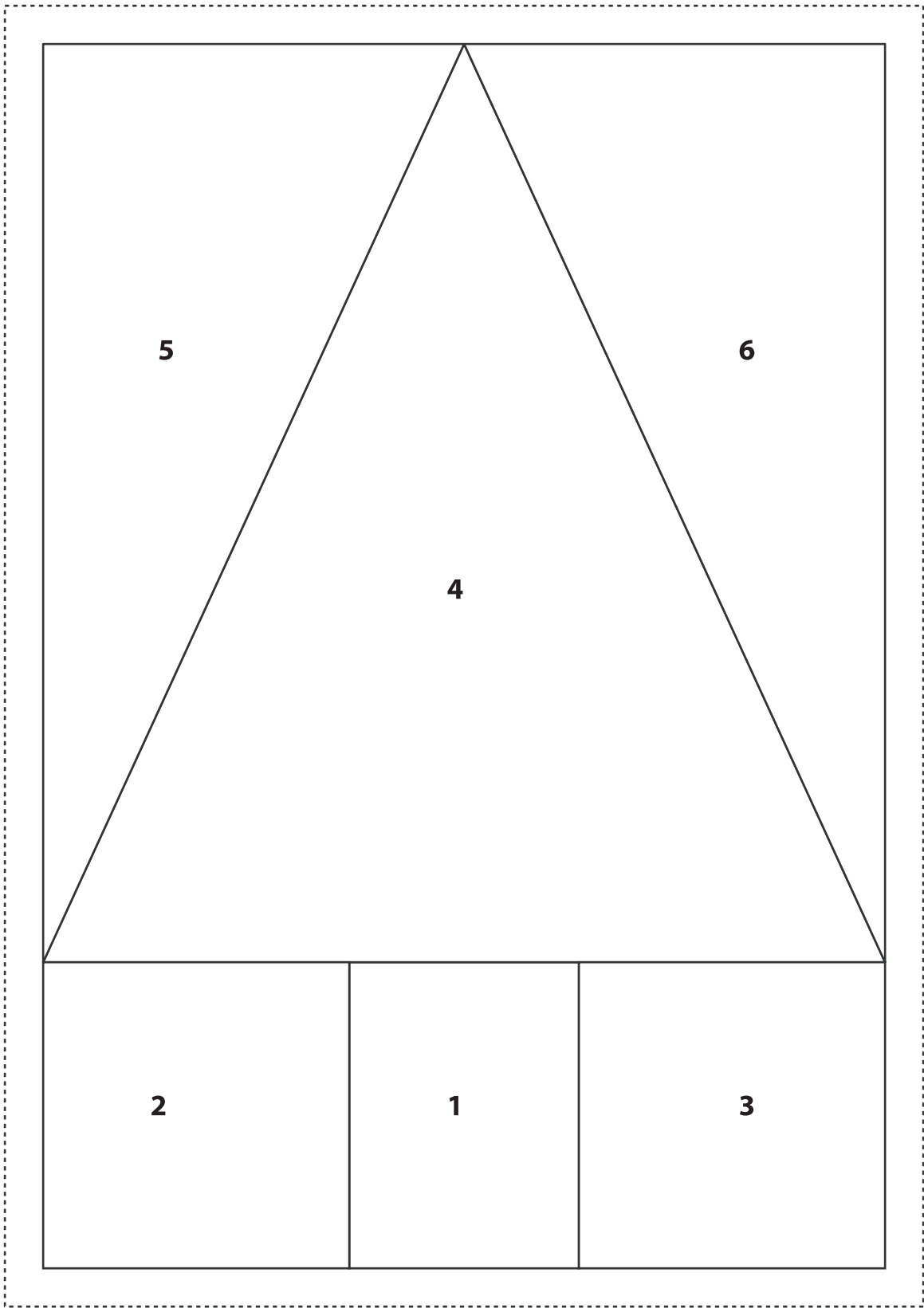
3. Stitch a completed Foundation 2 unit to the right-hand side of a matching Foundation 1 unit. Repeat to make a total of (4) Fabric F and (10) Fabric G Double Tree Blocks.



(Quilt assembly and finishing instructions on last page.)



Downloads from the internet are not always consistent. Please compare this ruler with an actual ruler to verify size accuracy of templates before cutting.



Downloads from the internet are not always consistent. Please compare this ruler with an actual ruler to verify size accuracy of templates before cutting.

## Quilt Assembly and Finishing:

1. Referring to the quilt pictured on the cover, stitch a 2" Fabric H strip to the top and bottom of each 8-1/2" Fabric B and Fabric C strip. Trim each strip set to 40-1/2" long.
2. Again using the quilt pictured as a guide to correct fabric placement, stitch together (3) Double Tree Blocks and (2) Double Four-Patch Blocks, alternating the two types of blocks. Repeat to make a second block row. In the same manner make (2) more block rows with (3) Double Four-Patch Blocks and (2) Double Tree Blocks in each row.
3. Sew the units from steps 1 and 2 together alternating the block rows with the scenic fabric units.
4. Trim the selvages from the 2" Fabric H strips and sew the strips together end to end to make a long 2" strip. From this long strip cut (2) 65-1/2" and (2) 43-1/2" lengths (if your measurements are different, cut to fit your quilt top). Stitch the longer pieces to the left and right sides of the quilt top. Sew the shorter pieces to the top and the bottom.
5. Trim the selvages from the 3" Fabric I strips and sew the strips together end to end to make a long 3" strip. From this long strip, cut (2) 68 1/2" and (2) 48-1/2" lengths (if your measurements are different, cut to fit your quilt top). Sew the longer pieces to the left and right sides of the quilt top. Sew the shorter pieces to the top and bottom.
6. Trim the selvages from the 8-1/2" Fabric A strips and sew the strips together end to end to make a long 8-1/2" strip. If necessary to hide joining seams, cut additional strips to yield (2) 73-1/2" lengths and (2) 48 -1/2" lengths (if your measurements are different, cut to fit your quilt top). Sew the longer pieces to the left and right sides of the quilt top, noting orientation. Sew a Fabric G Double Tree Block to each end of each shorter border strip, noting orientation of the tree blocks. Sew a pieced border to the top and bottom to complete the quilt top.
7. Layer the completed quilt top with batting and backing and quilt as desired.
8. Trim the finished quilt and bind using the 2 -1/4" Fabric E strips.

*While all possible care has been taken to ensure the accuracy of this pattern, we are not responsible for printing errors or the way in which individual work varies.*

