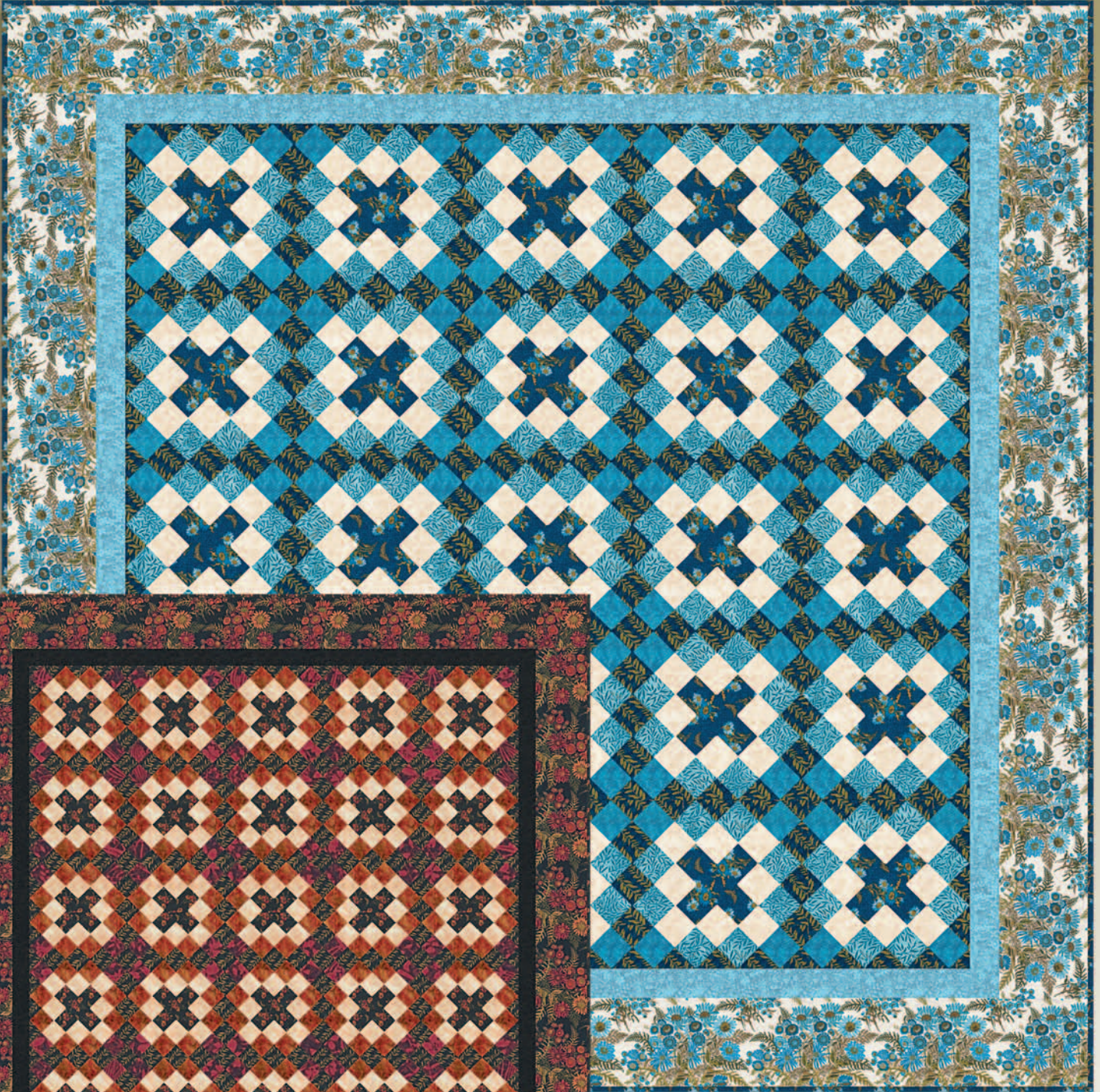




Meadow Garden

Fabric designed by Yolanda Fundora for Blank Quilting
Quilt designed by Cate Tallman-Evans for Blank Quilting
Finished Size is 91" x 91"



Blue Version

Black Version

Meadow Garden

Fabric designed by Yolanda Fundora for Blank Quilting
Quilt designed by Cate Tallman-Evans for Blank Quilting

Finished Size: 91" x 91"
Block Size: 14" x 14"

Fabric Requirements:

Blue Version

Fabric A: 2-7/8 yds 5998 Blue
Fabric B: 7/8 yd 3504 Malibu
Fabric C: 1-1/2 yds M3708 Turquoise
Fabric D: 1-1/2 yds 5999 Ivory
Fabric E: 1-5/8 yds 5997 Blue
Fabric F: 7/8 yd 5999 Blue
Fabric G: 2-1/4 yds 5996 Blue
Backing: 8-1/2 yds 5996 Blue
99" x 99" piece of batting
100% cotton thread to blend with fabrics
Usual sewing supplies

Black Version

Fabric A: 2-7/8 yds 5998 Black
Fabric B: 7/8 yd 5999 Cranberry
Fabric C: 1-1/2 yds 3504 Dune
Fabric D: 1-1/2 yds 3504 Buff
Fabric E: 1-5/8 yds 5997 Black
Fabric F: 7/8 yd 5999 Black
Fabric G: 2-1/4 yds 5996 Black
Backing: 8-1/2 yds 5996 Black
99" x 99" piece of batting
100% cotton thread to blend with fabrics
Usual sewing supplies

Cutting Instructions: *All strips are cut across the width of the fabric from selvage edge to selvage edge.*

From Fabric A: (32) 3" strips. Recut (8) strips into (100) 3" x 3" squares.

From Fabric B: (8) 3" strips.

From EACH of Fabric C and Fabric D: (16) 3" strips.

From Fabric E: (10) 3" strips. Recut (2) strips into (25) 3" x 3" squares.
(10) 2 1/4" strips for binding.

From Fabric F: (8) 3" strips for the inner border.

From Fabric G: (9) 8 1/2" strips for the outer border.

Sewing Instructions:

All seams are sewn with right sides together, raw edges even, and 1/4" seam allowance.

Make the Strip Sets:

Strip Set A

Sewing lengthwise, join 3" Fabric A, B, D and E strips to yield a strip set 10 1/2" high from raw edge to raw edge. Repeat to make a total of (8) strip sets. Recut these strip sets into a total of (100) 3" wide segments.

strip set A diagram



Strip Set B

Sewing lengthwise, join 3" Fabric A, C, and D strips to yield a strip set 8" high from raw edge to raw edge. Repeat to make a total of (8) strip sets. Recut these strip sets into a total of (100) 3" wide segments.

strip set B diagram



Strip Set C

Sewing lengthwise, join 3" Fabric A and C strips to yield a strip set 5 1/2" high from raw edge to raw edge. Repeat to make a total of (8) strip sets. Recut these strip sets into a total of (100) 3" wide segments.

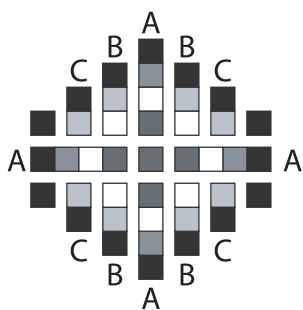
strip set C diagram



Block Assembly:

1. Referring to the Block Layout Diagram, arrange as shown: (4) each of Strip Set Segments A, B, and C, (4) Fabric A squares and (1) Fabric E square.

block layout diagram

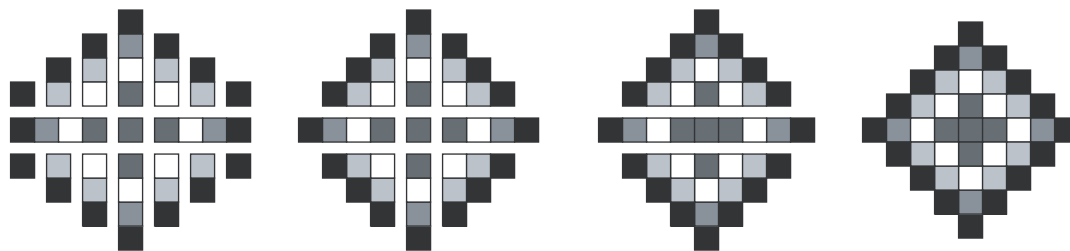


(Block assembly continued on following pages.)

Block Assembly (continued):

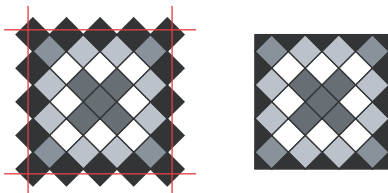
- Referring to the Block Assembly Diagrams, stitch together the block components in the sequence shown.

block assembly diagrams



- Trim the block as shown, being sure to leave 1/4" beyond seam intersections for the outer seam allowance. Stay stitch 1/8" in all the way around the outer edge of the block to prevent stretching.

block trimming diagrams



- Repeat steps 1-3 to make a total of (25) blocks.

Quilt Assembly and Finishing:

- Arrange the blocks into (5) rows with (5) blocks in each row. Stitch the blocks into rows and sew the rows together to complete the body of the quilt top.
- Trim the selvages from the 3" Fabric F strips and sew the strips together end to end to make a long 3" strip. From this long strip, cut (2) 70-1/2" and (2) 75-1/2" lengths (if your measurements are different, cut to fit your quilt top). Stitch the shorter pieces to the left and right sides of the quilt. Sew the longer pieces to the top and bottom.
- Trim the selvages from the 8-1/2" Fabric G strips and sew the strips together end to end to make a long 8-1/2" strip. From this long strip cut (2) 75-1/2" and (2) 91-1/2" lengths (if your measurements are different, cut to fit your quilt top). Stitch the shorter pieces to the left and right sides of the quilt top. Sew the longer pieces to the top and the bottom to complete the quilt top.
- Layer the completed quilt top with batting and backing and quilt as desired.
- Trim the finished quilt and bind using the 2-1/4" Fabric E strips.

While all possible care has been taken to ensure the accuracy of this pattern, we are not responsible for printing errors or the way in which individual work varies.

