

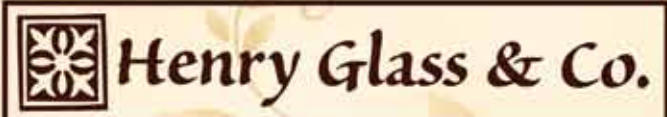
LIBERTY RIDGE

Designed by Little Quilts



Quilt 48" x 62"

Set of Four Placemats 19" x 14"
& Garland



49 West 37th Street
New York, NY 10018
tel: 212-686-5194 fax: 212-532-3525
New York: 800-294-9495
www.henryglassfabrics.com

To view the entire collection and download a free pattern, please visit our website at www.henryglassfabrics.com

LIBERTY RIDGE

Designed by Little Quilts

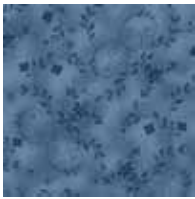


7404-44

One Panel for quilt.
An additional panel is required for a set of four placemats and a four flag garland.

4 Placemats 14" x 19" 7398-47 3/8 yd inner border
 7399-77 5/8 yd outer border
 Backing and binding 1-1/2 yard
 4 - 7" x 10" Garland Flags require 1/2 yd backing and stiff fusible webbing or interfacing, cord or ribbon for hanging.

Yardage for quilt 48" x 62" - Quilt requires a backing of 3 1/2 yards



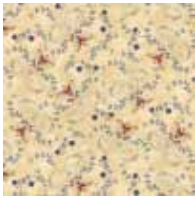
7398-11
1/4 yd



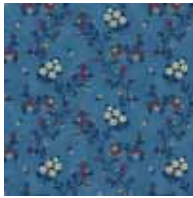
7398-44
1 yd



7398-88
1/2 yd



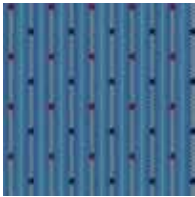
7398-47
3/4 yd



7399-11
1/8 yd



7399-77
1-1/8 yd



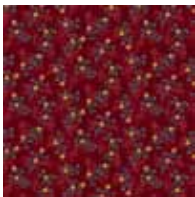
7400-11
1/8 yd



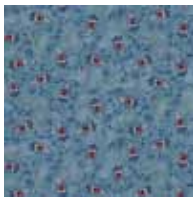
7400-44
1/4 yd



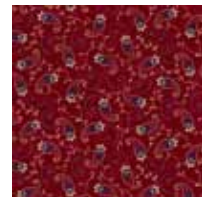
7401-77
1/8 yd



7401-88
1/4 yd



7402-11
1/8 yd



7402-88
1/4 yd



7403-44
3/4 yd



7403-88
1/4 yd

Henry Glass Fabrics
www.henryglassfabrics.com

LIBERTY RIDGE

Designed by Little Quilts

FABRIC REQUIREMENTS 48" X 62" Quilt

7404-44	Flag Panel	One*
7398-11	Blue Vine	1/4 yd
7398-44	Cream Tonal	1 yd
7398-47	Cream Vine	3/4 yd
7398-88	Red Tonal	1/2 yd (binding)
7399-77	Dk Blue Lg Floral	1 - 1/8 yds
7399-11	Lt Blue Lg Floral	1/8 yd
7400-11	Blue Stripe	1/8 yd
7400-44	Cream Stripe	1/4 yd
7401-77	Blue Sm Floral	1/8 yd.
7401-88	Red Sm Floral	1/4 yd
7402-11	Lt. Blue Paisley	1/8 yd
7402-88	Red Paisley	1/4 yd
7403-44	Cream Star Print	3/4 yd
7403-88	Red Star Print	1/4 yd
Backing		3 1/2 yds

*Placemats approximately 19" x 14"

Four placemats and four flag banners will require a second flag panel

7398-47 Inner border 3/8 yd

7399-77 Border for placemats 5/8 yd

Backing & Binding 1-1/2 yds

*Garland Flags approximately 7" x 10½" each

Four small flags and 1/2 yd for backing

Stiff fusible interfacing or batting

Note:

Please read through instructions before beginning.

Seams are 1/4" - wof = width of fabric

Press toward the darker fabric when possible and press borders toward the border.

CUTTING REQUIREMENTS

Large Flag from Panel 7404-44**

15½" x 22¾"*** allowing ¼" seam allowance all around

Cream vine 7398-47

(2) 3" x 29" for border around flag (this is cut oversize)

(2) 3" x 17" for border around flag (this is cut oversize)

(8) 1½" x 8½" strips for star blocks

(4) 1½" x 9½" strips for spacer bars

(2) 2½" x 9½" strips for spacer bars

Cream tonal 7398-44

(2) 3" x 19½" strips for second border around flag

(2) 3" x 32½" strips for second border around flag

(3) 2⅞" squares for half square triangle corner blocks

(2) 2½" x 36½" strips rows above & below ribbon border

(28) 2½" x 4½" rectangles for flying geese ribbon border

Cream star print 7403-44

(5) 2½" x wof strips, piece together end to end and

cut: (2) 2½" x 40½" strips for inner border

(2) 2½" x 50½" strips for inner border

Blue floral 7399-77

(6) 4½" x wof strips, piece together end to end and

cut: (2) 4½" x 48½" strips for outer border

(2) 4½" x 54½" strips for outer border

Red tonal 7398-88

(6) 2 ½" x wof strips, pieced end to end for binding

Assorted Light Blues

A total of 28 - 2½" squares for flying geese blocks in ribbon border

(1) 2⅞" square for half square triangles in ribbon border

Assorted Dark Blues

A total of 28 - 2½" squares for flying geese blocks in ribbon border

(2) 2⅞" squares for half square triangles in ribbon border

Assorted Creams

A total of (32) 2½" x 4½" rectangles for star blocks

A total of (32) 2½" squares for the star blocks

Assorted Blues and Reds

A total of (64) 2½" squares for star points

Assorted Reds

A total of (8) 4½" squares for star block centers

CONSTRUCTION

Flag Center

**Cut large flag 15½" x 22¾" (if your flag differs in size, don't worry. After adding the first four border strips, it will be trimmed to size.)

Add a 3" x 17" cream vine strip to each side of the flag. Trim ends even with flag.

Next, sew 3" x 29" cream vine strip to the top and bottom. When the borders are added and pressed, **Trim flag unit to measure: 19½" x 27½"**.

Add cream tonal 3" x 19½" border strips to each side of the unit. Now, add the 3" x 32½" cream tonal strips to the top and bottom of the unit.

Your quilt should now measure 24½" x 32½" in order for the flying geese ribbon border to fit properly.

Flying Geese Ribbon Border

Note: Be sure to use the light blue and dark blue squares in the same position in each block to achieve the ribbon effect. Also, before piecing into borders, layout your flying geese blocks and half-square triangle corner blocks to get the "ribbon look."

For each flying geese block, use one dark blue 2½" square, one light blue 2½" square and a cream tonal 2½" x 4½" rectangle.

See diagram on the next page

Draw a line from corner to corner on the wrong side of the blue squares.

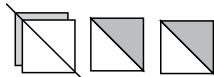


Align one square, right sides together, on one end of rectangle. Sew along the drawn line. Trim corner away and press. Repeat on the other end of the rectangle.

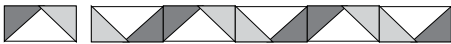
Make 28 flying geese for the border.

Make 4 half square triangles for corners of the ribbon border as follows:

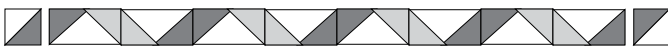
Pair the two dark blue, one light blue and three cream tonal $2\frac{7}{8}$ " squares. Draw a line from corner to corner on the wrong side of the cream squares. Sew $\frac{1}{4}$ " from each side of the drawn line. Cut apart on the line. This will give you four six half square triangles. You will only use four.



Join six flying geese units together as shown in the diagram. Sew one to each side of the quilt top.



Join eight flying geese together in two rows for the top and bottom. Add a half square triangle to each end of the rows. Sew to the top and bottom of the quilt.



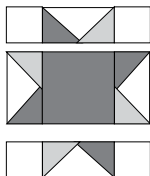
Add cream tonal $2\frac{1}{2}$ " x $36\frac{1}{2}$ " border strips to the top and bottom of the quilt. Your quilt measures $32\frac{1}{2}$ " x $36\frac{1}{2}$ " at this point.

Stars

Make 8 - 8" star blocks

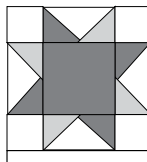
Using assorted cream $2\frac{1}{2}$ " x $4\frac{1}{2}$ " rectangles and assorted blue and red $2\frac{1}{2}$ " squares make a total of 32 flying geese blocks as described previously.

For each star block, sew one flying geese block to each side of a $4\frac{1}{2}$ " red square. Sew a cream $2\frac{1}{2}$ " square to each side of two flying geese blocks. Sew these to the top and bottom of the blocks as shown.



Make 8 blocks

Add a $1\frac{1}{2}$ " x $8\frac{1}{2}$ " strip to one side of each star.

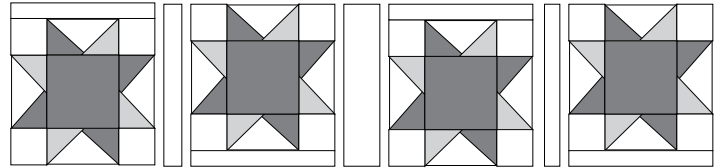


Piece Star Rows

To achieve the dancing, floating star look:

Arrange four star blocks by turning the blocks so the $1\frac{1}{2}$ " x $8\frac{1}{2}$ " strip is alternating between the top and bottom of the blocks.

Piece the blocks together with cream vine spacer bars; each row uses two $1\frac{1}{2}$ " x $9\frac{1}{2}$ " spacer bars and one $2\frac{1}{2}$ " x $9\frac{1}{2}$ " spacer bar. Repeat for the bottom row of star blocks.



Sew pieced star rows to the top and bottom of the quilt top.

Borders

Cream star print inner border:

Add $2\frac{1}{2}$ " x $50\frac{1}{2}$ " strips to each side of the quilt top.
Add $2\frac{1}{2}$ " x $40\frac{1}{2}$ " strips to the top and bottom of the block.

Blue floral print outer border:

Add $4\frac{1}{2}$ " x $54\frac{1}{2}$ " strips to the sides of the quilt top.
Add $4\frac{1}{2}$ " x $48\frac{1}{2}$ " strips to the top and bottom of the quilt.

Layer, quilt and bind with $2\frac{1}{2}$ " strips red tonal.

PLACEMATS

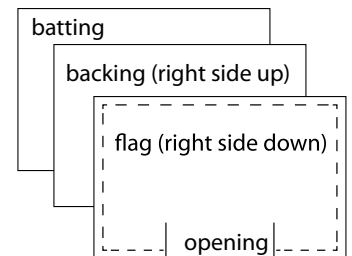
Cut medium size flags from panel with a $\frac{1}{4}$ " seam allowance.

Cut 1" strips from cream vine. Sew to sides, trim and sew on top and bottom strips. Trim to fit.

Blue Floral outer border is cut 2" or size of your choice. Add to the placemat in the same manner.

Layer with batting and backing, quilt as desired. Bind.

An option for finishing is shown at the right. Layer batting, backing and placemat, stitch around edge leaving an opening for turning. Trim corners, and turn right side out. Edge stitch around all sides. Quilt as desired.



FLAG GARLAND

Cut out around small flags with a $\frac{1}{4}$ " seams allowance. Cut a fabric to match for the back. Using heavy fusible web, follow manufacturers directions, fuse to back of small flag and backing fabric. (Option - fusible Pellon could also be used.) Trim edges even. Zig Zag stitch around edges.

An option for the garland construction: Layer batting, backing and flag, stitch around edges, leaving an opening for turning, as shown above. Turn right side out, edge stitch around all sides and quilt as desired.

Attach to ribbon or cord to hang.