

Hip Happy *LizzieB creative!*



62" x 82"



Henry Glass & Co.

49 West 37th Street
New York, NY 10018
tel: 212-686-5194 fax: 212-532-3525
New York: 800-294-9495
www.henryglassfabrics.com

Hip Happy

DESIGNED BY LIZZIE B CRE8IVE!

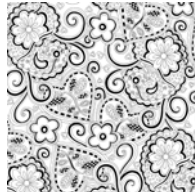
Lizzie B CRE8IVE!®

FABRIC REQUIREMENTS FOR HIP HAPPY QUILT

62" x 82"



Fruit Stripe
multi 7508-11
1 yd



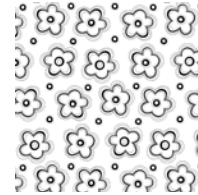
Paisley Hearts
white 7501-4
2/3 yd



Paisley Hearts
aqua 7501-11
1/4 yd



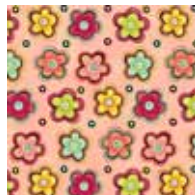
Paisley Hearts
berry 7501-25
1/4 yd



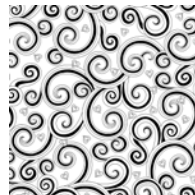
Happy Flower
white 7502-4
2/3 yd



Happy Flower
aqua 7502-11
1/4 yd



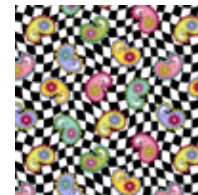
Happy Flower
berry 7502-22
1/4 yd



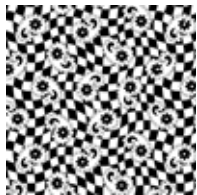
Mod Swirl
white 7503-4
2/3 yd



Mod Swirl
black 7503-99
2/3 yd



Hip Paisley
multi 7504-11
1/4 yd



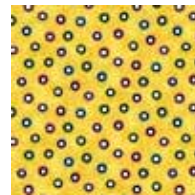
Hip Paisley
black 7504-99
2/3 yd



Cheerio Dot
white 7505-4
2/3 yd



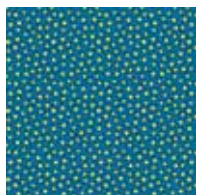
Cheerio Dot
berry 7505-25
1/4 yd



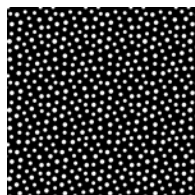
Cheerio Dot
lemon 7505-33
1/4 yd



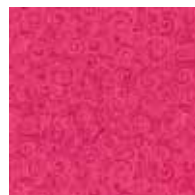
Whimsy Dot
aqua 7506-11
1/4 yd



Whimsy Dot
blue 7506-77
1/4 yd



Whimsy Dot
black 7506-99
2/3 yd



Whimsy Swirl
berry 7507-25
1/4 yd



Whimsy Swirl
lemon 7507-33
2/3 yd



Whimsy Swirl
lime 7507-66
1/4 yd

You will need 5 yards for backing and fusible webbing for the appliqué shapes.



Henry Glass & Co.

49 West 37th Street
New York, NY 10018
tel: 212-686-5194 fax: 212-532-3525
New York: 800-294-9495
www.henryglassfabrics.com

Hip Happy

Designed by Lizzie B Creative

Quilt Size 62" x 82"

FABRIC	SKU #	YARDAGE	10 1/2" SQUARES	#CIRCLES	#SQUARES
			Cut:		
Paisley Hearts, berry	7501-25	7/8 yd		1	1
Paisley Hearts, aqua	7501-11	7/8 yd		2	1
Paisley Hearts, white	7501-4	2/3 yd	5		
Happy Flower, berry	7502-22	1/4 yd		1	2
Happy Flower, aqua	7502-11	1/4 yd		2	1
Happy Flower, white	7502-4	2/3 yd	4		
Mod Swirl, white	7503-4	2/3 yd	4		
Mod Swirl, black	7503-99	2/3 yd	6		
Hip Paisley, multi	7504-11	1/4 yd		1	2
Hip Paisley, black	7504-99	2/3 yd	6		
Cheerio Dot, pink	7505-25	1/4 yd		1	1
Cheerio Dot, lemon	7505-33	1/4 yd		2	1
Cheerio Dot, white	7505-4	2/3 yd	4		
Whimsy Dot, aqua	7506-11	1/4 yd		1	1
Whimsy Dot, blue	7506-77	1/4 yd		1	2
Whimsy Dot, black	7506-99	2/3 yd	6		
Whimsy Swirl, berry	7507-25	1/4 yd		1	1
Whimsy Swirl, lemon	7507-33	2/3 yd		2	1
Whimsy Swirl, lime	7507-66	1/4 yd		2	1
Fruit Stripe, multi	7508-11	1 yd*		1	2
Fusible Webbing	2 yds or enough to cut 35 - 6" circles and squares				
Back		5 yd			

*includes yardage for binding

CUTTING:

From **black and white** prints as indicated above, cut:

(35) 10 1/2" squares for block backgrounds.

Note: cut border strips before appliqué circles and squares. When piecing long strips end to end, trim selvages before piecing.

Lemon Whimsy Swirl, cut (6) 1 1/2" x wof strips. Piece together end to end and cut:

(2) 1 1/2" x 52 1/2" strips for inner border

(2) 1 1/2" x 70 1/2" strips for inner border

Berry Paisley Hearts, cut (3) 5 1/2" x wof strips. Piece together end to end in one long strip and cut:

(1) 5 1/2" x 52 1/2" strip for outer border

(1) 5 1/2" x 82 1/2" strip for outer border

Aqua Paisley Hearts, cut (3) 5 1/2" x wof strips. Piece together end to end in one long strip and cut:

(1) 5 1/2" x 52 1/2" strip for outer border

(1) 5 1/2" x 82 1/2" strip for outer border

Multi Fruit Stripe, cut (8) 2 1/2" x wof strips. Piece together end to end in one long strip for binding

Please refer to the picture of the quilt as a guide for fabric placement when making the blocks.
There are (35) 10 ½" blocks in the quilt top. Seam allowances are 1/4". wof=width of fabric.
Follow manufacturers directions for use of fusible webbing.

APPLIQUÉ

Appliqué instructions are for fusible webbing. If you prefer to appliqué with a turned under edge, add a seam allowance around each circle and square.

Circles (6")

Use the chart above for the number of 6 inch circles from each fabric.

Use template provided. Trace circle on paper side of fusible webbing. Cut out leaving a small margin around the circle.

Fuse to circle fabric. Cut out on the traced line. Make 18 circles.

Squares (6")

Use chart above for the number of 6 inch squares from each fabric.

Use template provided. Trace square on paper side of fusible webbing. Cut out leaving a small margin around the square.

Fuse to square fabric. Cut out on the traced line. Make 17 squares..

BLOCKS

- Match the prepared circles and squares to the corresponding 10 ½" background squares. To center the appliqué shapes, finger press the 10 ½" background squares in half twice to find the center. Finger press the appliqué circles and squares in half twice. Match centers and pin. Fuse in place.
- Stitch around the fused circles and squares with a blanket stitch or zig zag stitch.

QUILT ASSEMBLY

Layout the blocks in 7 rows of 5 blocks. Use the quilt picture for placement. Sew rows together, alternating pressing direction of each row.

INNER BORDER Lemon Whimsy Swirl

- Stitch 1 ½" x 70 ½" strips to each side of the quilt top. Press toward the border strips.
- Stitch 1 ½" x 52 ½" strips to the top and bottom. Press toward the border strips.

OUTER BORDER

- Stitch 5 ½" x 52 ½" Berry Paisley Hearts to top of quilt top. Press toward the border strips.
- Stitch 5 ½" x 52 ½" Aqua Paisley Hearts to bottom of the quilt top.
- Stitch 5 ½" x 82 ½" Pink Paisley Hearts to left side of quilt top.
- Stitch 5 ½" x 82 ½" Aqua Paisley Hearts to right side of quilt top.

Layer, quilt and bind with Fruit Stripe binding.

Make sure your printer is not set to scale the pages.

The circle and square should measure 6" in diameter.

Trace onto template plastic or cardboard to make templates.