

BABY & ME



Fabric Designed by Leanne Anderson of The Whole Country Caboodle



Quilt Designed by Sue Falkowski

56" x 76"



Henry Glass & Co.

49 West 37th Street
 New York, NY 10018
 tel: 212-686-5194 fax: 212-532-3525
 New York: 800-294-9495
www.henryglassfabrics.com

To view the entire collection and download a free pattern, please visit our website at www.henryglassfabrics.com

Baby & Me

Fabric designed by Leanne Anderson
The Whole Country Caboodle

56" x 76" quilt designed by Sue Falkowski



7440-77



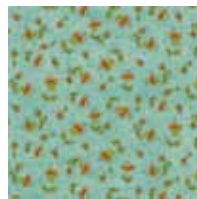
7441-77



7442-44
4 1/2 yds backing



7442-77
1/2 yd



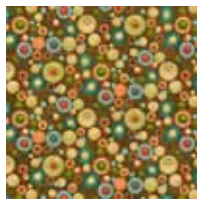
7443-11
1/2 yd



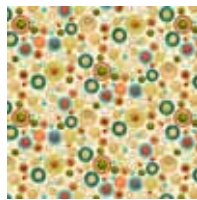
7443-33
1/4 yd



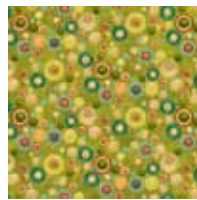
7443-44
1/4 yd



7444-38
1 yd



7444-44
1/4 yd



7444-66
1/4 yd



7445-33
1/8 yd



7445-66
1/2 yd



7445-38
3/8 yd



7446-66
1/4 yd



7446-77
5/8 yd



7447-66
1/4 yd



7447-77
1/8 yd



7447-83
3/4 yd



7448-38



7448-44
1/2 yd

Baby & Me

Fabric Designed by Leanne Anderson of the Whole Country Caboodle
Quilt designed by Sue Falkowski

FABRIC REQUIREMENTS for 56" x 76" Quilt

7440-77	One Panel		7445-38	Brown Monotone Star	3/8 yd
7442-77	Teal Character Toss	1/2 yd	7445-66	Green Monotone Star	1/2 yd
7443-11	Teal Flower Toss	1/2 yd	7446-77	Teal Tossed Stars (binding)	5/8 yd
7443-44	Ivory Flower Toss	1/4 yd	7446-66	Green tossed Stars	1/4 yd
7443-33	Apricot Flower Toss	1/4 yd	7447-77	Teal Swirls	1/8 yd
7444-44	Ivory Dot	1/4 yd	7447-83	Dk. Orange Swirls	3/4 yd
7444-66	Green Dot	1/4 yd	7447-66	Green Swirls	1/4 yd
7444-38	Brown Dot	1 yd	7448-44	Ivory Rick Rack	1/2 yd
7445-33	Gold Monotone Star	1/8 yd	Back		4 1/2 yd

CUTTING REQUIREMENTS

Cut center panel 23 1/2" x 41 1/2" (leave 1/4" of brown around gold. If your panel does not measure this, don't worry. It will be adjusted with the first border.)*

Brown Monotone Star 7445-38

If your center panel measures 23 1/2" x 41 1/2", cut (4) strips 1 1/2" x wof.

*If your center panel DOES NOT measure 23 1/2" x 41 1/2", cut (4) strips 2 1/2" x wof. This is a 1" finished border, but 1" extra is allowed to compensate.

Teal Flower Toss 7443-11

(2) 3" x 28 1/2" strips for second border
(3) 2" x wof strips, pieced together end to end.
From this cut:

(2) 43 1/2" strips for second border

Ivory Flower Toss 7443-44, Apricot Flower Toss 7443-33 & Ivory dot 7444-44

Cut a total of: (38) 2 1/2" x 4 1/2" rectangles for flying geese border

Green Dot 7444-66, Green Tossed Stars 7446-66 & Green Swirls 7447-66

Cut a total of: (76) 2 1/2" squares for flying geese border

Green Monotone Stars 7445-66, Teal Character toss 7442-77 & Ivory Rick Rack 7448-44

From each cut:

(5) 2 1/2" x wof strips

Teal Swirls 7447-77

(8) 3 7/8" squares, cut once on the diagonal for a total of 16 triangles

Gold Monotone Star 7445-33

(4) 4 1/4" squares, cut twice on the diagonal for a total of 16 triangles

Orange Swirls 7447-83

(4) 4 1/4" squares, cut twice on diagonal for a total of 16 triangles

(6) 2 1/2" x wof strips

(4) 2 1/2" squares

Brown Dot 7444-38

(7) 4 1/2" wof strips

Teal tossed Stars 7446-77

(7) 2 1/2" x wof strips for binding

Note:

Please read through instructions before beginning.

Seams are 1/4" - wof = width of fabric

Press toward the darker fabric when possible and press borders toward the border.

CONSTRUCTION

*If your center panel does not measure 23 1/2" x 41 1/2", cut the brown monotone star strips 2 1/2" x wof. This is where you can compensate for any discrepancy in size.

First Border, Brown Monotone Star

Sew brown monotone star 7445-38 strips together end to end, creating one long strip.

Cut (2) strips 41 1/2" and sew to each side of the panel. Cut (2) strips 25 1/2" and join to the top and bottom of panel. Press toward borders.

If necessary, trim your center panel with added borders so that it will measure 25 1/2" x 43 1/2".

Second Border, Teal Flower Toss

Sew 2" x 43 1/2" strips to each side of the top.

Sew 3" x 32 1/2" strips to the top and bottom.

At this point, your quilt will measure 28 1/2" x 52 1/2".

Flying Geese Blocks

For the blocks in this border use the (38) 2 1/2" x 4 1/2" rectangles cut from Ivory Flower Toss, Apricot Flower toss & Ivory Dot and the (78) 2 1/2" squares cut from Green Dot, Green tossed stars & Green Swirls.

For each flying geese block, use one 2 1/2" x 4 1/2" cream rectangle and two 2 1/2" green squares. Draw a line from corner to corner on the wrong side of the green squares.

Align one square, right sides together, on one end of a cream rectangle. Sew along the drawn line. Trim corner away and press. Repeat on the other end of the rectangle.



Make 38 flying geese for the border.

Flying Geese Border

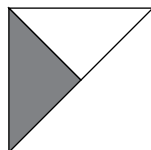
Sew (2) strips of twelve flying geese. Add one of these to each side of the quilt top. The cream fabric is placed next to the teal border.

Sew (2) strips of seven flying geese. Add a 2 1/2" orange swirl square to each end of the strips. Sew these to the top and bottom of the quilt top. The quilt now measures 32 1/2" x 52 1/2".

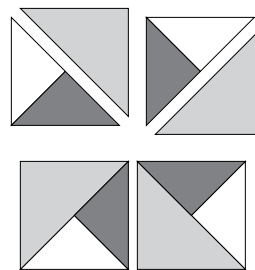
Pinwheel Blocks – 6" finished.

To make one block, sew an orange monotone star triangle to a gold monotone star triangle. Be sure the gold fabric is on the right as shown.

Make four.



Sew each of these pieced triangles to a larger teal triangle. Make four. Sew these together into a four patch block as shown



Make four blocks.

Pieced border

Sew 2 1/2" x wof strips of green monotone end to end to create one long strip. Also, do this with the 2 1/2" strips teal character toss and 2 1/2" strips ivory rick rack.

Sew these long strips together into one strip set, in this order: Green monotone star to teal character toss to ivory rick rack. (Refer to picture of quilt.)

From this strip set, cut (2) 52 1/2" pieces and (2) 32 1/2" pieces. Sew the long border strip pieces to each side of the quilt top.

Add a pinwheel block to each end of the two shorter border strip sets. Press pinwheel blocks toward the borders.

Sew these to the top and bottom of the quilt top. The quilt now measures 44 1/2" x 64 1/2".

Orange Swirl Border

Sew 2 1/2" x wof strips of orange swirl together end to end, creating another long strip. From this, cut two 2 1/2" x 64 1/2" pieces and sew to each side of the quilt top.

Cut two 2 1/2" x 48 1/2" strips and add these to the top and bottom. The quilt now measures 48 1/2" x 68 1/2".

Brown Dot Border

Sew the 4 1/2" x wof strips into one long strip. From this, cut two 4 1/2" x 68 1/2" pieces for each side of the quilt. Add these.

Cut two 4 1/2" x 56 1/2" pieces for the top and bottom. Add to the quilt.

Layer, quilt and bind with Teal Star Toss.