

Maple Stories Quilt

featuring the Maple Stories Collection from EBI Fabric

Pillow Size: 65 ½" x 65 ½"
Skill Level: Intermediate

Design by Sasha K Studio

Fabric Requirements & Cutting Instructions

Please Note: All strips are cut across the width of fabric (WOF) from selvage to selvage edge unless otherwise noted.

	Fabric	Yardage	Cutting
(A)	QT1301 Maple Stories Panel	1 panel	• Fussy cut six 10" squares.
(B)	QT1307-90 Etchings Rust	$\frac{7}{8}$ yard	<ul style="list-style-type: none"> • Cut one 4 $\frac{1}{2}$" x width of fabric (WOF) strip. Sub-cut the strip into eight 4 $\frac{1}{2}$" squares. • Cut one 3 $\frac{1}{4}$" x WOF strip. Sub-cut the strip into three 3 $\frac{1}{4}$" squares. • Cut seven 2 $\frac{1}{2}$" x WOF strips for the binding.
(C)	QT1306-93 Diamond Accents Amber	$\frac{1}{4}$ yard	• Cut one 3 $\frac{1}{4}$ " x WOF strip. Sub-cut the strip into three 3 $\frac{1}{4}$ " x 5 $\frac{1}{4}$ " strips.
(D)	QT1302-27 Autumn Favors	$\frac{2}{3}$ yard	<ul style="list-style-type: none"> • Cut one 5 $\frac{1}{4}$" x WOF strip. Sub-cut the strip into three 5 $\frac{1}{4}$" squares. • Cut five 2 $\frac{1}{2}$" x WOF strips. Sew the strips together and cut two 2 $\frac{1}{2}$" x 41" strips and two 2 $\frac{1}{2}$" x 45" strips.
(E)	QT1305-27 Sentiments Brown	$\frac{1}{4}$ yard	• Cut one 3 $\frac{1}{4}$ " x WOF strip. Sub-cut the strip into three 3 $\frac{1}{4}$ " x 5 $\frac{1}{4}$ " strips.
(F)	QT1303-11 Leaf's Journey	$\frac{1}{3}$ yard	• Cut one 10" x WOF strip. Sub-cut the strip into six 1 $\frac{1}{2}$ " x 10" strips and six 1 $\frac{1}{2}$ " x 8" strips.
(G)	QT1307-11 Etchings Gray	$\frac{3}{4}$ yard	<ul style="list-style-type: none"> • Cut one 10" x WOF strip. Sub-cut the strip into twelve 2 $\frac{1}{2}$" x 10" strips. • Cut four 2 $\frac{1}{2}$" x 37" strips.
(H)	QT1307-34 Etchings Olive	$\frac{3}{8}$ yard	<ul style="list-style-type: none"> • Cut two 2 $\frac{1}{2}$" x 37" strips. • Cut two 2 $\frac{1}{2}$" x 41" strips.
(I)	QT1304-30 Maple Ribbons Ivory	1 $\frac{2}{3}$ yards	<ul style="list-style-type: none"> • Fussy cut four 4 $\frac{1}{2}$" x 45" strips from the length of fabric (LOF), centered on the leaf. • Cut two 1 $\frac{1}{2}$" x 53" strips from LOF. • Cut two 1 $\frac{1}{2}$" x 55" strips from LOF.
(J)	QT1304-27 Maple Ribbons Brown	1 $\frac{3}{4}$ yards	<ul style="list-style-type: none"> • Cut four 4 $\frac{1}{2}$" x 58" strips from LOF. • See instructions to fussy cut leaves for the eight corner appliqued blocks.
(K)	QT1305-11 Sentiments Gray	1 $\frac{3}{4}$ yards	• Fussy cut four 2" x 58" strips from LOF, centered on a row of medallions.
Back	(Your Choice)	4 $\frac{1}{4}$ yards	• Cut two 74" x WOF strips. Piece the strips together to make the 74" x 74" back.

You will also need:

• $\frac{1}{4}$ yard of fusible web, threads to match, scissors, straight pins, acrylic ruler, rotary cutter and mat.

Block Assembly Instructions

Note: Press Seams open to help reduce bulk when sewing the medallion.

1. Sew one 3 ¼" x 5 ¼" Fabric E strip, one 3 ¼" Fabric B square, one 5 ¼" Fabric D square and one 3 ¼" x 5 ¼" Fabric C strip together to make one 4-patch block (Fig. 1). Repeat to make three 4-patch blocks total.
2. Sew one 1 ½" x 8" Fabric F strip to each side of one 4-patch block. Sew one 1 ½" x 10" Fabric F strip to the top and bottom of the 4-patch block to complete one 10" x 10" pieced block (Fig. 2). Repeat to make three pieced blocks total.
3. Press fusible web to the wrong side of Fabric J fabric over the leaves. Cut out eight small leaves and eight large leaves for the corner block appliques.
4. Refer the quilt photo to press two small leaves on one 4 ½" Fabric B square to make one inner corner square. Repeat to make four inner corner blocks total.
5. Refer the quilt photo to press two large leaves on one 4 ½" Fabric B square to make one outer corner square. Repeat to make four outer corner blocks total.

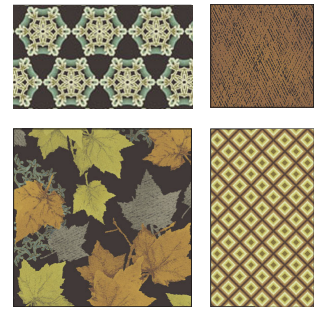


Fig. 1

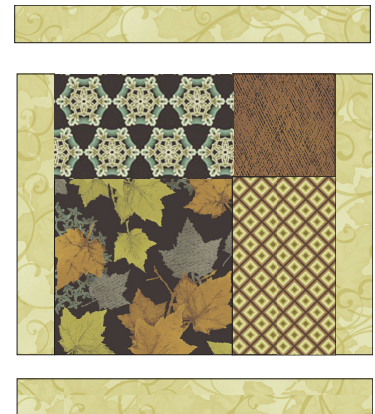


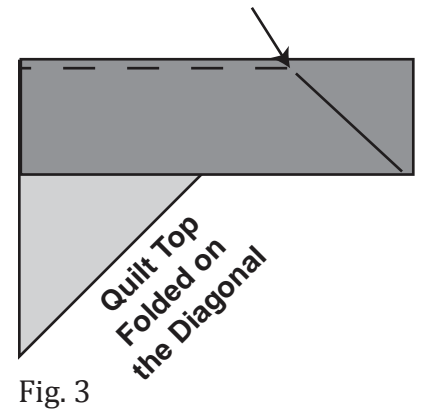
Fig. 2

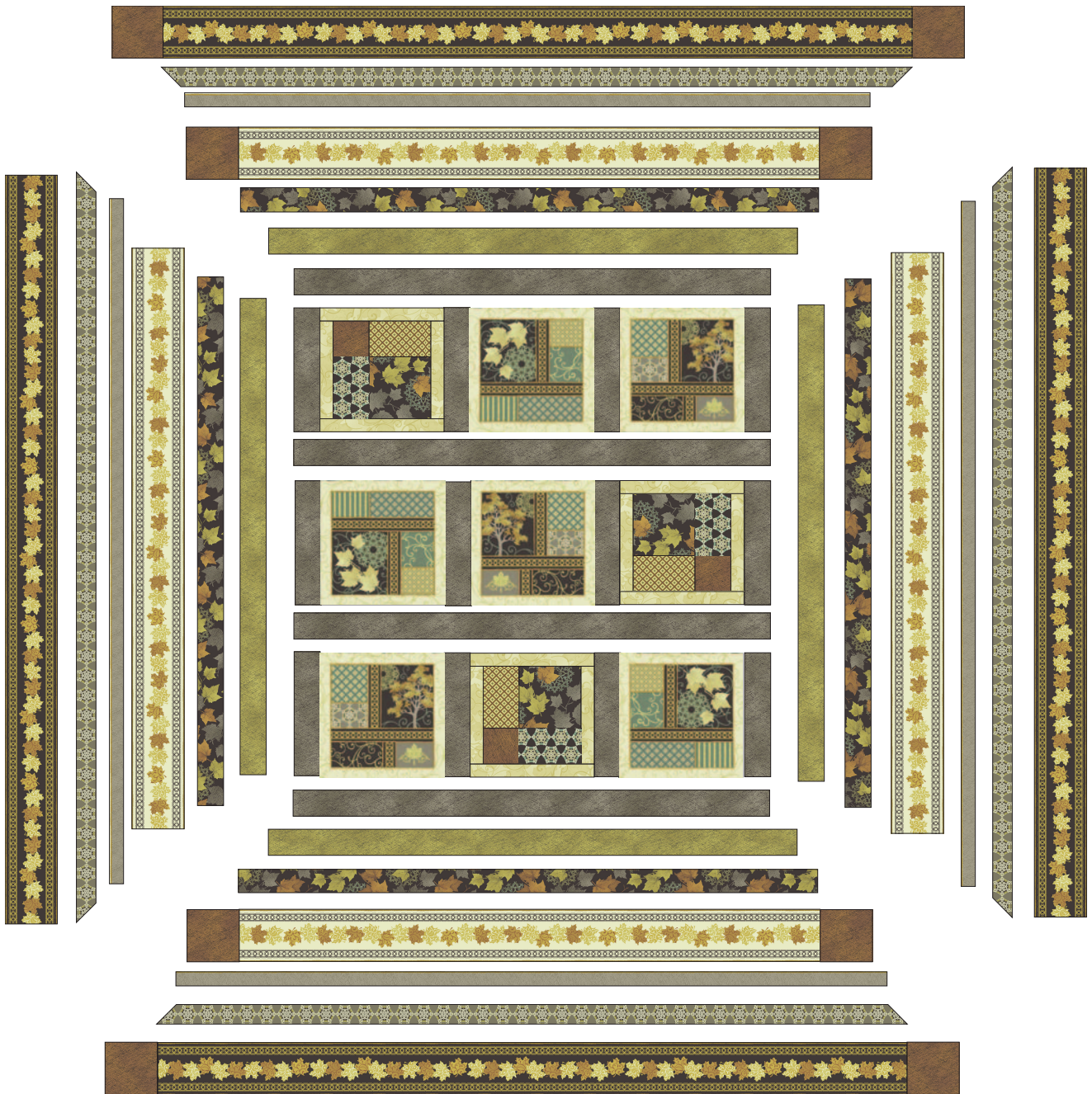
Quilt Top Assembly Instructions

Refer to the quilt layout while assembling the quilt top.

6. Sew four 2 ½" x 10" Fabric G strips, two 10" Fabric A squares and one 4-patch block together to make Row One.
7. Sew four 2 ½" x 10" Fabric G strips, two 10" Fabric A squares and one 4-patch block together to make Row Two.
8. Sew four 2 ½" x 10" Fabric G strips, one 4-patch block and two 10" Fabric A squares together to make Row Three.
9. Sew four 2 ½" x 37" Fabric G strips and the three rows together, in numerical order and alternating block rows with Fabric G strips to make the quilt center block.
10. Sew one 2 ½" x 37" Fabric H strip to each side of the center block. Sew one 2 ½" x 41" Fabric H strip to the top and bottom of the center block.
11. Sew one 2 ½" x 41" Fabric D strip to each side of the center block. Sew one 2 ½" x 45" Fabric D strip to the top and bottom of the center block.

12. Sew one 4 ½" x 45" Fabric I strip to each side of the center block.
13. Sew one 4 ½" inner corner block to each end of one 4 ½" x 45" Fabric I strip. Repeat to make a second strip. Sew the strips to the top and bottom of the center block.
14. Sew one 1 ½" x 53" Fabric I strip to each side of the quilt top. Sew one 1 ½" x 55" Fabric I strip to the top and bottom of the quilt top.
15. Center one 2" x 58" Fabric K strip on one side of the quilt top and pin in place. Start sewing the strip a ¼" from the top edge of the quilt top and stop a ¼" from the bottom edge. **DO NOT TRIM THE EXCESS.** Repeat with the opposite side.
16. Repeat Step 12 to sew one 2" x 58" Fabric K strip to the top and to the bottom of the quilt top, making sure to stop and start ¼" away from each end of the quilt top. To miter each corner, fold the quilt top on a diagonal, wrong side together. This should line up the strips from adjacent sides (Fig. 3).
17. Starting at the sewn seam (represented by the arrow in Fig. 3), draw a 45-degree line out to the edge of the fabric. Sew on the drawn line. Trim the excess fabric, leaving a ¼" seam allowance. Repeat this step with the remaining corners.
18. Sew one 4 ½" x 58" Fabric J strip to each side of the quilt top.
19. Sew one 4 ½" outer corner square to each end of one 4 ½" x 58" Fabric J strip. Repeat to make a second strip. Sew the strips to the top and bottom of the quilt top.
20. Layer and quilt as desired.
21. Sew the seven 2 ½" x 42" Fabric B binding strips together end-to-end with 45-degree seams to make the binding. Fold this long strip in half lengthwise with wrong sides together and press.
22. Bind as desired.





Quilt Layout